

SECTION 2 VIDEO CAMERAS

1. Production video cameras	
DXC-D30P	70
DXC-D30WSP.....	71
DXC-637P series	72
DXC-327BP series.....	73
2. Production camera accessories	74
3. Sensor video cameras	
DXC-H10.....	94
DXC-LS1P.....	95
DXC-9100P.....	96
DXC-950P	97
DXC-930P	98
DXC-151AP.....	99
DXC-107AP.....	100
4. Sensor camera accessories	103

1. Production video cameras

DXC-D30P series

3-chip colour video camera

- Incorporates DSP(Digital Signal Processing) technology based on the TruEye™
- Directly dockable to analogue recorders (PVV-3P and EVV-9000P)
- Directly dockable to the DSR-1P DVCAM Digital Recorder
- Compact size, lightweight and low power consumption
- High density three 2/3-inch IT Power HAD sensors and the new digital signal processing circuits offer superior picture quality
 - 850 TV lines of horizontal resolution
 - Excellent signal-to-noise ratio of 61dB
 - High sensitivity of F11.0 at 2000 lx
 - Smear level -125dB
- TruEye Process realizes faithful color reproduction
- High degree of stability in video output (offered by DSP)
- Uniformity of picture tone among multiple DXC-D30P units (offered by DSP)
- Skin Detail with auto detection system of active area
- Horizontal detail frequency control
- Red vertical detail correction
- New DCC Plus function on the basis of DynaLatitude processing - for ideal video level distribution in any situations
- Clean Detail by DSP provides Black Halo-free natural lines
- Clear Scan function for shooting computer displays without horizontal bands appearing across display screen
- Hyper Gain mode provides the combined effect of +30dB of electronic gain-up and +6dB of DPR (Dual Pixel Readout) under 1 lux illumination
- DPR (Dual Pixel Readout) technology realizes noiseless picture even when gain value is increased
- TLCS (Total Level Control System) to ensure the correct exposure even under/ over the limits of automatic iris control
- Intelligent Auto Iris control function
- EZ Mode and EZ Focus functions enable cameramen to get ready for shooting swiftly
- Easy-to-use File Management System (Five factory files and three user files available)
- The 10-pin REMOTE connector (RS-232C standard) allows control from external computers
- ATW (Auto Tracing White Balance) function automatically adjusts white balance when lighting conditions change
- Programmable gain mode allows precise gain selection from 8 gain values
- Three mode auto iris system- STD (Standard), BACK L(Back Light) and SPOT L(Spot Light)
- DCC (Dynamic Contrast Control) circuit can reproduce 600% dynamic range
- Variable Speed Electronic Shutter
- Clear Scan
- Supplies a 1kHz audio reference signal simultaneously with the colour bar signal
- Date and time can be superimposed on the video signal
- Directly dockable with DSR-1P DVCAM Digital Recorder (Refer to the description of the DSR-130P)
- Directly dockable with the PVV-1AP/3P for high quality component acquisition (Refer to the description of PVV-D30P) or with the EVV-9000P for handy operation
- Can be combined with the recorders from Panasonic or JVC via the CA-512AP or CA-513
- When combined with CA-537P/327P, 26/14-pin connectors provides signal output in Y/R-Y/B-Y, VBS, Y/C and RGB forms for connection with various equipment
- Can be connected with computer equipment via CA-325A/325B camera adaptor
- Adjustable shoulder pad
- Monitor out function

Supplied accessories: Wind screen
 Lens mount cap
 Chart for flange focal
 Operating instructions



Specifications

General
 Image device: 2/3-inch Interline Transfer CCD (x3)
 795(H) × 596(V) total picture elements
 752(H) × 582(V) effective picture elements

Built-in filters: 1: 3200K, 2: 5600K + 1/8ND, 3: 5600K, 4: 5600K+1/64ND

Lens mount: Bayonet-mount
 Video signal system: PAL standard
 Sync system: Internal or external with VBS or BS
 Horizontal resolution: 850TV lines
 Minimum illumination: 0.5 lx with F1.4, Hyper Gain (DPR+30dB)
 0.8 lx with F1.8, Hyper Gain (DPR+30dB)

Sensitivity: F11.0 at 2000 lx (3200K, 89.9% reflectance)(typical)
 Gain selection: -3dB, 0dB, +3dB, +6dB, +9dB, +12dB, +18dB, * DPR+18dB, +24dB, * DPR+24dB, Hyper Gain (* DPR+30dB)
 61dB (typical)

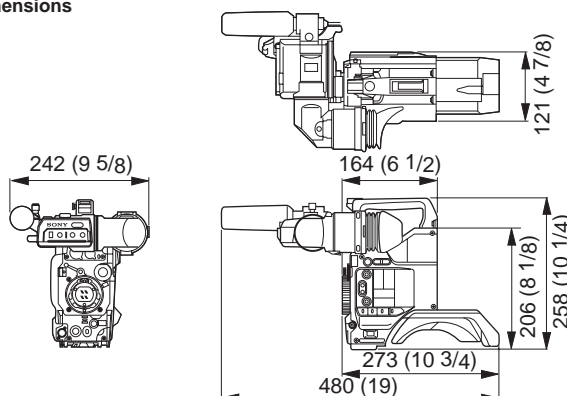
S/N ratio: DC12V
 Power requirements: 12W (without VF/CA-537P)
 Power consumption: -10 to 45°C (14 to 113°F)
 Operating temperature: Approx. 2.3 kg (5 lb 1 oz, for camera head only)
 Mass: Approx. 4.3 kg (9 lb 8 oz, with VF and lens, w/o lens hood)

Inputs/outputs
 INTERFACE: Pro 50-pin
 VIDEO OUT: BNC type
 LENS: 12-pin
 VF: DIN 8-pin
 REMOTE: 10-pin
 MONITOR OUT: BNC type

* DPR = +6dB, DPR +18dB = +24dB, DPR+24dB = +30dB, DPR+30dB = +36dB

	DXC-D30PF1	DXC-D30PK1	DXC-D30PL1	DXC-D30PH
Camera head	Yes	Yes	Yes	Yes
Camera handle	Yes	Yes	Yes	Yes
DXF-701WSC Viewfinder	Yes	Yes	Yes	Option
External microphone	Yes	Yes	Yes	Not available
VCT-U14 Tripod adaptor	Yes	Yes	Yes	Option
VCL-918BY Zoom lens	Yes	Yes	Option	Option
LC-421 Carrying case	Yes	Option	Option	Option
RM-LG1 Logger	Yes	Yes	Yes	Option

Dimensions



1. Production video cameras

DXC-D30WSP

Wide-screen switchable colour video camera

- Aspect ratio is switchable (16:9 wide screen or 4:3)
- All the functions of the DXC-D30P are incorporated
- Power HAD WS CCD
- 16:9 ID information is included (DVCAM system such as DSR-1/60/80 detects 16:9 ID and can record or play back the 16:9 video signal)

Supplied accessories:

- Remote Control Unit RM-LG1
- Viewfinder DXF-701WSCE (incl. Mic holder)
- External microphone (incl. Mic. cable)
- Wind Screen
- Tripod adaptor VCT-U14
- Angle plate for the DXC-D30WSP
- Lens cap
- Flange back chart
- Operation manual for the DXC-D30P
- Operation manual supplement for the DXC-D30WSP
- ClipLink Guide

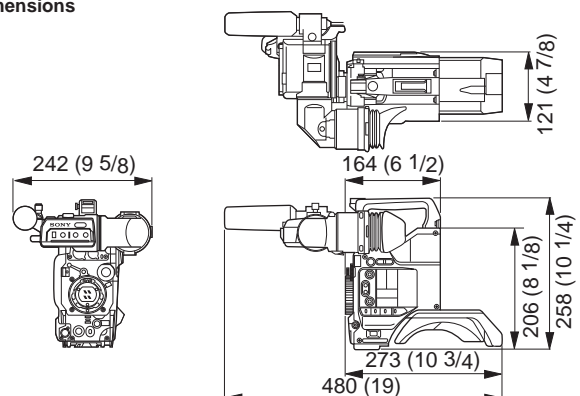
Specifications:

Image device: 3-chip 2/3-inch, Interline-Transfer CCD
 Optics: F1.4 medium index prism system
 Effective picture elements: 980 × 582 (H × V)
 Total picture elements: 1038 × 594 (H × V)
 Sensing area: 9.6 mm × 5.4 mm
 Built-in filters:
 1: 3200K/3000K
 2: 5600K+1/8ND
 3: 5600K
 4: 5600K+1/64ND
 Lens mount: Sony 2/3-inch Bayonet mount
 Signal system: PAL colour system
 Scanning system: 2:1 interlaced, 625 lines, 50 fields/s
 Horizontal frequency: 15.625 kHz
 Vertical frequency: 50 Hz
 Sync system: Internal and External with the VBS or BS signal
 Horizontal resolution: 16:9 mode: 700TV lines
 4:3 mode: 700TV lines
 Vertical resolution: 450TV lines (without EVS)
 530TV lines (with EVS)
 Minimum illumination: 0.5 lx with F1.4, Hyper gain (30dB+DPR)
 0.8 lx with F1.8, Hyper gain (30dB+DPR)
 Sensitivity: F11 at 2000 lx (3200K, 89.9% reflectance) (typical)
 Gain selection: -3dB, 0dB, 3dB, 6dB, 9dB, 12dB, 18dB, 18dB+DPR,
 24dB, 24dB+DPR, Hyper Gain (30dB+DPR)
 Shutter speed selection: OFF, 1/60, 1/250, 1/500, 1/1000, 1/2000 s
 Clear scan selection: 50.3 to 201.4Hz
 Signal-to-noise ratio: 61dB (typical)
 Registration: 0.05% (all zones, without lens)
 Geometric distortion: Below measurable level
 Video output: Camera head BNC connector:
 VBS: 1.0 Vp-p, sync negative
 26-pin connector of CA-537/P docked to DXC-D30WS/P
 VBS: 1.0Vp-p, sync negative
 Y/R-Y/B-Y: Y: 1.0Vp-p, sync negative
 R-Y/B-Y: 525mVp-p
 RGB: 1.4Vp-p
 Y/C: Y: 1.0Vp-p, sync negative
 C: 300mVp-p (burst level)
 Inputs/ Outputs: INTERFACE: Pro76-pin DIGITAL,
 Pro 50-pin
 VIDEO OUT: BNC-type
 MONITOR OUT: BNC-type (for UC/CE model)
 RCA phono-type (for J model)
 LENS: 12-pin
 VF: DIN 8-pin, 20-pin
 REMOTE 1: Stereo mini
 REMOTE 2: 10-pin
 Power requirements: DC 12V (10.5 to 17V)
 Power consumption: 14.9W (without VF)
 15.3W (when docked with the DSR-1/P)
 17W (with VF)
 Operating temperature: -10°C to 45°C (23°F to 113°F)
 Storage temperature: -20°C to 60°C (-4°F to 140°F)
 Mass: Approx. 2.5 kg (5 lb 8 oz) for camera head only
 Approx. 3.3 kg (7 lb 4 oz) with VF and microphone
 Dimensions: 121 (W) × 206 (H) × 273 (D) mm
 (4 7/8 × 8 1/8 × 10 3/4 inches)
 (without projections)
 Note: DPR is equivalent to +6dB gain up.
 18dB+DPR: Equivalent to +24dB
 24dB+DRR: Equivalent to +30dB
 Hyper Gain (30dB+DPR): Equivalent to +36dB



VIDEO CAMERAS

Dimensions



1. Production video cameras

DXC-637P series

3-chip colour video camera

- PVV-637P perfect camcorder operation with the PVV-3P
- Compact size, lightweight and low power consumption
- High density three 2/3-inch IT Hyper HAD sensors, Sony's original spatial offset technology and improved electronic circuit offer superior picture quality
 - 800 TV lines of horizontal resolution
 - Excellent signal-to-noise ratio of 61dB
 - High sensitivity of F8.0 at 2000 lx
- Smear almost negligible due to the HAD sensor structure and OCL layer of the Hyper HAD sensor
- The 2-dimensional optical low pass filter and Digital IE circuit suppress aliasing/spurious phenomenon
- The detail limiter effectively reduces unsmooth diagonal edges appeared on highly contrasted object (Clean Detail)
- Clear Scan function for shooting computer displays without horizontal bands appearing across display screen
- Hyper Gain mode provides the combined effect of +30dB of electronic gain-up and +6dB of DPR (Dual Pixel Readout) under 1 lux illumination
- DPR (Dual Pixel Readout) technology realizes noiseless picture even when gain value is increased
- EZ Mode and EZ Focus functions enable cameramen to get ready for shooting swiftly
- DCC (Dynamic Contrast Control) circuit can reproduce 600% dynamic range
- DCC plus provides excellent colour reproduction even at the high luminance level
- EVS (Enhanced Vertical Definition System) realizes a remarkable vertical resolution of 530TV lines
- ATW (Auto Tracing White Balance) function automatically adjusts white balance when lighting conditions change
- Programmable gain mode allows precise gain selection from 8 gain values
- Three modes of matrix- STD (Standard), H.SAT (High Saturation), and FL (Fluorescent light) are provided to change the chroma saturation and hue
- Three mode auto iris system- STD (Standard), BACK L(Back Light) and SPOT L(Spot Light)
- Variable Speed Electronic Shutter
- Supplies a 1kHz audio reference signal simultaneously with the colour bar signal
- Date and time can be superimposed on the video signal
- CA can be coupled directly with the PVV-1AP/3P for high quality component acquisition or with the EVV-9000P for handy operation
- Can be combined with the recorders from Panasonic or JVC via the CA-512 or CA-513
- When combined with CA-537P/327P, 26/14-pin connectors provides signal output in Y/R-Y/B-Y, VBS, Y/C and RGB forms for connection with various equipment
- Can be connected with computer equipment via CA-325A/325B camera adaptor
- The VFs display PVV-3P's status, a remarkable 600TV lines of horizontal resolution
- V-DTL signal is mixed to the VF's video signal for easy focusing (VF Super Detail)
- Safety zone and centre marker indications in viewfinder
- The VCL-916BYA aspherical lens allows a wider angle of view and reduced ghost and flare
- Adjustable shoulder pad
- Monitor out function

Supplied accessories: Wind screen
 Lens mount cap
 Chart for flange focal
 Operating instructions



Camera adaptor is optional

Specifications

General

Image device: 2/3-inch Interline Transfer CCD (x3)
 816(H) × 606(V) total picture elements
 786(H) × 581(V) effective picture elements

Built-in filters: 1: 3200K, 2: Cross(3200K), 3: 5600K, 4: 5600K+1/16ND

Lens mount: Bayonet-mount

Video signal system: PAL standard

Sync system: Internal or external with VBS or BS

Horizontal resolution: 800TV lines

Minimum illumination: 1 lx with F1.4, Hyper Gain (DPR+30dB)
 1.5 lx with F1.8, Hyper Gain (DPR+30dB)

Sensitivity: F8.0 at 2000 lx (3200K, 89.9% reflectance)(typical)

Gain selection: -3dB, 0dB, +3dB, +6dB, +9dB, +12dB, +18dB,
 * DPR+18dB, +24dB, * DPR+24dB,
 Hyper Gain (* DPR+30dB)
 61dB (typical)

S/N ratio:

Power requirements: DC12V

Power consumption: 10.5W (without VF/CA-537P)

Operating temperature: -10 to 45°C (14 to 113°F)

Mass: Approx. 2.3 kg (5 lb 1 oz, for camera head only)
 Approx. 3.6 kg (7 lb 15 oz, with the CA-537P)

Inputs/outputs

INTERFACE: DIN 50-pin

VIDEO OUT: BNC type

LENS: 12-pin

VF: DIN 8-pin

REMOTE: 10-pin

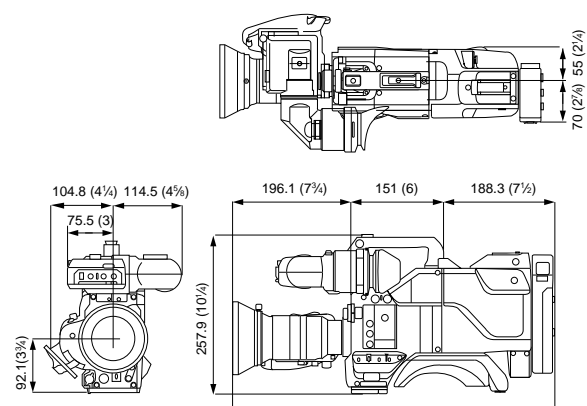
MONITOR OUT: RCA type

* DPR = +6dB, DPR +18dB = +24dB, DPR+24dB = +30dB, DPR+30dB = +36dB

Composition	Model	DXC-637PH	DXC-637PL	DXC-637PK
Camera head DXC-637P		Yes	Yes	Yes
Zoom lens VCL-916BYA		Option	Option	Yes
Viewfinder DXF-601CE		Option	Yes	Yes
External microphone		Option	Yes	Yes
Tripod adaptor VCT-U14		Option	Yes	Yes

Dimensions

With optional camera adaptor



1. Production video cameras

DXC-327BP series

3-chip CCD colour video camera

- Directly dockable not only with current analog VTR's/CA's but also with Digital Recorder (DSR-1P)
- High sensitivity of F9.0 at 2000 lx and a low smear level (1/10 of the conventional camera) given by three Sony 1/2-inch IT Power HAD (Hole Accumulated Diode) sensors
- 700TV lines of horizontal luminance resolution thanks to the high density CCD chips (470,000 total picture elements/440,000 effective picture elements) and Sony's original spatial offset technology
- The Power HAD sensor structure in combination with advanced electronic circuitry allows an excellent S/N ratio of
- Electronic shutter equipped
- 2-line image enhancer for crisp image
- Modular design allows choice of combo stand-alone or multi-camera use
- Can be combined with the DSR-1P DVCAM Digital Recorder, allowing simple ClipLink function
- Can be docked directly with the PVV-1AP/3P for high quality component acquisition
- Can be combined with S-VHS recorders from Panasonic or JVC via the CA-512P or CA-513 Camera Adaptor
- When combined with CA-537P, 26-pin connector on camera adaptor provides signal output in Y/R-Y/B-Y, VBS, Y/C and RGB forms for connection with various equipment
- The DXF-601CE: Diecast aluminum body, 600TV lines of horizontal resolution, the large eye cup for easy viewing, external TALLY and a new dioptre mechanism for easier dioptre adjustment
- Compact size, lightweight, and low power consumption
- VCL-714BX cableless 14 × zoom lens
- Convenient built-in microphone
- Safety Zone and Centre Marker indications in viewfinder
- Built-in character generator can generate letters and numbers for titles and dates
- 5 step auto iris override (+1F stop/+0.5F stop/Presets/−0.5F stop/−1.0F stop)
- Convenient gain-up function (0/+9/+18dB)
- Zebra video level indication
- Two memory white balance system
- ABL (Automatic Black Level) function
- RM-M7G remote connector on camera head for remote control in any configuration
- Extended system versatility with optional CA-325AP/325B Camera Adaptors, RM-M7G Remote Control Unit, and CCU-M7P/M5P



VIDEO CAMERAS

Specifications

General

Image device: 1/2-inch Interline Transfer CCD (×3),
795 (H) × 596 (V) total picture elements
752 (H) × 582 (V) effective picture elements

Electronic viewfinder: 1.5-inch monochrome (except DXC-327BPH)

Lens: F1.4, 7.5 to 90mm zoom lens with auto iris/macro mechanism (DXC-327BPF/327BPK)

Lens mount: Bayonet-mount

Video signal system: PAL standard

Horizontal resolution: 700TV lines

Minimum illumination: 6.0 lx with F1.4, +18dB

Sensitivity: F9.0 at 2000 lx

Sync system: Internal or external selectable

S/N ratio: 61dB

Power requirements: DC 12V

Power consumption: 8.0W (without VF/CA-537P)

Operating temperature: −5 to 45°C (23 to 113°F)

Mass: 2.0 kg (4 lb 6 oz, for camera head only)
3.3 kg (7 lb 4 oz, with the CA-537P)

Inputs/Outputs

VTR/CCU/CMA: Sony Z-type, 26-pin

VIDEO OUT: BNC-type

GENLOCK: BNC-type

MIC IN: XLR-type, 3-pin

LENS: Hot-shoe type or 6-pin (for 2/3-inch lens)

REMOTE: 10-pin

VF: DIN 8-pin

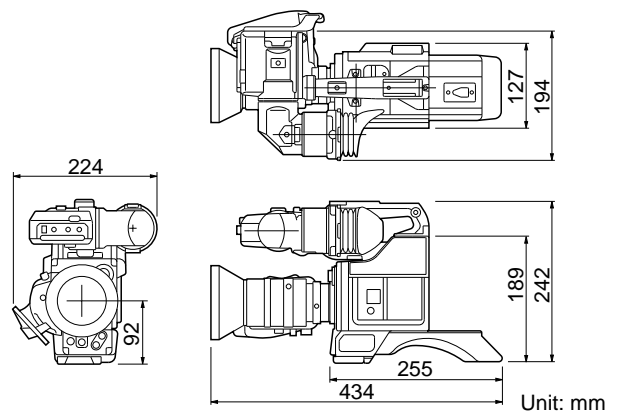
DC IN: XLR-type, 4-pin

EARPHONE: mini jack

INTERCOM: mini intercom jack

Model	DXC-327BPF	DXC-327BPK	DXC-327BPL	DXC-327BPH
Composition	Yes	Yes	Yes	Yes
Colour video camera head	Yes	Yes	Yes	Yes
Tripod adaptor VCT-U14	Yes	Yes	Yes	Option
Viewfinder DXF-601CE	Yes	Yes	Yes	Option
Zoom lens VCL-714BX	Yes	Yes	Option	Option
Carrying case LC-421	Yes	Option	Option	Option

Dimensions



2. Production camera accessories

CCU-TX7P

Camera Control Unit

•Triax camera control unit for the DXC-D30P and the DXC-637P •Runs either on AC or DC (12 V) power •High speed high quality data transmission •High quality triax transmission •Long distance transmission, up to 1125mm via (phi)13.2mm cable (Belden) and up to 750m via Ø8.5mm cable (Fujikura, Belden) •Two component video outputs (selectable from Y/R-Y/B-Y, R/G/B and Y/C) in addition to two composite output •Two inputs for return video •Colour teleprompter compatible •Flexible intercom system •Program microphone system •RS-232C port •Coaxial control capability •Half a 19-inch rack size wide and 4 units high

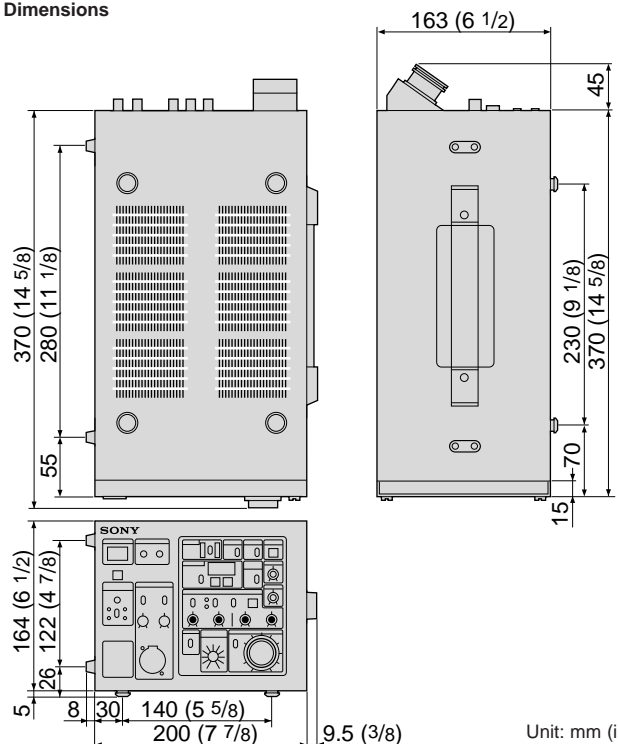
Supplied accessories: AC power cord × 1
Plug holder for AC power cord × 1
Number plate (1 set)
Operation manual × 1

Specifications

Input connectors: GEN LOCK: BNC type, loopthrough, VBS/BS, 1.0Vp-p, 75ohms
RETURN (1,2): BNC type, loopthrough, VBS, 1.0 Vp-p, 75ohms
PROMPT (prompter): BNC type, loopthrough, VBS, 1.0 Vp-p, 75ohms
PGM IN: XLR 3-pin × 1
Output connectors: VBS (1,2): BNC type, VBS, 1.0 Vp-p, 75ohms
(*Y/R-Y/B-Y (1,2): BNC type, Y: 1.0Vp-p, 75ohms R-Y/B-Y: 525mVp-p, 75ohms
(*R/G/B (1,2): BNC type, 700mVp-p, 75ohms
(*Y/C (1,2): BNC type, Y: 1.0Vp-p, 75ohms C: 300mVp-p, 75ohms
SYNC: BNC type, VBS, 0.3 Vp-p, 75ohms, negative
PIX (picture monitor): BNC type, 1.0 Vp-p, 75ohms
WF (waveform monitor): BNC type, 700 mVp-p, 75ohms (Encoded output: 1.0 Vp-p, 75ohms)
WF MODE: 4-pin × 1
MIC OUT (CH-1/2): XLR 3-pin × 2, 0dBu/-20dBu balanced, 2 channels
Camera control: CAMERA: Triax (Fischer type) × 1
input/output: COAX: BNC type × 1
connectors: REMOTE: 10-pin
INTERCOM/TALLY: D-sub 25-pin × 1 4W/2W TALLY: 24V DC, TTL level or contact selectable
INTERCOM (Front): XLR 5-pin × 1
RTS: XLR 3-pin × 1
RS232C: D-sub 25-pin × 2
Power requirements: AC 220 to 240V or DC 10.5 to 17.0V
Power consumption: 95W max.
Cable length: 1500 m max. (±14.5 mm)
Operating temperature: 5°C to 40°C (41°F to 104°F)
Storage temperature: -20°C to 55°C (-4°F to 131°F)
Mass: Approx. 8.45 kg (18 lb 10 oz)
Dimensions: 218 (W) × 169 (H) × 415 (D) mm (8⁵/₈ × 6³/₄ × 16³/₈ inches)



Dimensions



(*) These CCU output signals can be selected to be R/G/B or Y/R-Y/B-Y or Y/C.
(Note: This product is not available in some countries.)

Unit: mm (inch)

2. Production camera accessories

CCU-M7P

Camera control unit for DXC-D30P/D30WSP/637P/327BP/930P series

- Remote Control of DXC-D30P/D30WSP/637P/327BP/930P series colour video camera with maximum cable length of 300m
- Scene File memory for up to four shooting conditions (excl. DXC-930P)
- VBS, R/G/B, Y/R-Y/B-Y, Y/C outputs
- XLR connector for MIC output
- Built-in AC power supply
- 19-inch rack mountable and 2-units high

Specifications

Power requirements:	AC 185 to 275V, 50/60Hz
Power consumption:	62W
Inputs/outputs:	VBS OUT (x2); BNC-type, 1.0Vp-p, sync negative, 75Ω
	R/G/B OUT; BNC-type, 700mVp-p, 75Ω
	Y/R-Y/B-Y OUT; BNC-type, Y: 1.0Vp-p, sync negative, 75Ω R-Y/B-Y: 525mVp-p (75% colour bars)
	Y/C OUT; Y/C connector (4-pin), Y] 1.0Vp-p, sync negative, 75Ω C] 300mVp-p, 75Ω
	SYNC OUT; BNC-type, 4.0Vp-p, 75Ω, negative
	GENLOCK IN; BNC-type, VBS (1.0Vp-p) or BS (300mVp-p), loop through
	RET VIDEO IN; BNC-type, VBS, 1.0Vp-p, loop-through
	CAMERA; Sony Z-type, 26-pin
	TALLY/INTERCOM; DIN 4-pin or screw terminals
	MIC OUT; XLR-type, 3-pin, -20dBu
Control:	Gain select Output mode select Status display ON/OFF Shutter speed select Iris (auto/manual) White balance (auto/manual/preset) R/B gain Black balance (auto/manual/preset) Master pedestal R/B pedestal* Gamma (manual/preset) Master gamma* R/B gamma* Knee point (auto/manual/preset)* Detail level Sub-carrier phase Horizontal phase Scene File operation* Tally/Intercom*
Operating temperature:	-10 to 45°C (14 to 113°F)
Dimensions:	Approx. 424 (W) × 103 (H) × 387 (D) mm (16 ³ / ₄ × 4 ¹ / ₈ × 15 ¹ / ₄ inches)
Mass:	8.5 kg (18 lb 12 oz)
Supplied accessories:	AC power cord Rack mount metals
Optional cables:	(CCU-M7P ↔ DXC-D30P/D30WSP/637P/327BP series) CCZ-A2 (2m) CCZ-A5 (5m) CCZ-A10 (10m) CCZ-A25 (25m) CCZ-A50 (50m) CCZ-A100 (100m)
	(CCU-M7P ↔ DXC-930P) CCTZ-3RGB (3m) or CCTZ-3YC (3m) with CCZ-A cable
	(CCU-M7P ↔ RM-930) CCMC-1210P3 (3m)

* Note: When used with the DXC-930P, these items can not be controlled.



2. Production camera accessories

CCU-M5P

Camera control unit for DXC-D30P/D30WSP/ 637P/327BP/950P/930P

•Directly interfaces with both Z-type (26-pin) and Q-type (14-pin) camera systems •Also interfaces with DXC-950P/930P via CCTZ/CCZ-A or CCTQ/CCQ-AM combination •The focus and zoom can be also controlled by connecting RM-930 with CCMC-1210P3 cable •Remote control operation with maximum cable lengths of 300m for Z-type and 100m for Q-type cable VBS, R/G/B, Y/R-Y/B-Y, Y/C output •Built-in AC power unit •19-inch rack mountable and 2-units high

Specifications

Power requirements:	AC 187V to 275V, 50/60Hz
Power consumption:	54W
Inputs/outputs:	VBS OUT (×2); BNC-type, 1.0Vp-p, sync negative, 75Ω R/G/B OUT; BNC-type, 700mVp-p, 75Ω Y/R-Y/B-Y OUT; BNC-type Y: 1.0Vp-p, sync negative, 75Ω R-Y/B-Y: 525mVp-p (75% colour bars) Y/C OUT; Y/C connector (4-pin), [Y] 1.0Vp-p, sync negative, 75Ω [C] 300mVp-p, 75Ω SYNC OUT; BNC-type, 4.0Vp-p, 75Ω, negative GENLOCK IN; BNC-type, VBS(1.0Vp-p) or BB(450mVp-p), loop-through RET VIDEO IN; BNC-type, VBS, 1.0Vp-p, loop-through CAMERA; Sony Q-type, 14-pin Sony Z-type, 26-pin TALLY/INTERCOM; DIN 4-pin or screw terminals
Control:	Gain select Output mode select Status display Shutter speed select Iris (auto/manual) White balance (auto/manual/preset) Black balance (auto/manual/preset) ¹ R/B gain Master pedestal R/B pedestal Gamma (DXC-950P/930P only) Knee point (auto/manual/preset) ^{1,2} Detail level Sub-carrier phase Horizontal phase Tally/Intercom ^{1,2} Zoom (DXC-950P/930P only, by connecting RM-930 with CCMC-1210P3) Focus (DXC-950P/930P only, by connecting RM-930 with CCMC-1210P3)
Operating temperature:	5 to 40°C (41 to 104°F)
Dimensions:	Approx. 424 (W) × 103 (H) × 321 (D) mm (16 ³ / ₄ × 4 ¹ / ₈ × 12 ³ / ₄ inches)
Mass:	5.9 kg (13 lb)
Supplied accessories:	AC power cord Rack mount brackets
Optional cables:	(CCU-M5P ↔ DXC-D30P/D30WSP/637P/327BP) CCZ-A2 (2m) CCZ-A5 (5m) CCZ-A10 (10m) CCZ-A25 (25m) CCZ-A50 (50m) CCZ-A100 (100m) (CCU-M5P ↔ DXC-950P/930P) CCTZ-3RGB (3m) & CCZ-A Cable CCTZ-3YC (3m) & CCZ-A Cable CCTQ-3RGB (3m) & CCQ-AM Cable (CCU-M5P ↔ RM-930) CCMC-1210P3 (3m)

Note: ¹ When used with the DXC-950P, these items can not be controlled.

² When used with the DXC-930P, these items can not be controlled.



2. Production camera accessories

CMA-8ACE

Camera adaptor for DXC-D30P/ D30WSP/637P

327BP/Betacam SP 2000 PRO camcorders, EVW series

- Supplies DC power to the Camera, VO-8800P and dockable VTRs
- Video output is selectable between composite (BNC) or Y/C separate (S-connector)

- Input connector:
14-pin (CCQ type) for the camera
- Output connectors:
VIDEO OUT: BNC; VBS
S-connector; Y/C
MIC OUT: XLR 3-pin
- Power requirements:
AC 110/127/220/240V, 50/60Hz
- Power consumption:
95W max.
- Dimensions: 105(W) × 105(H) × 308(D)mm
(4¹/₄ × 4¹/₄ × 12¹/₄ inches)
- Mass: 2.8 kg (6 lb 3 oz)
- Supplied accessory:
AC power cord



RM-M7G

Remote control unit for DXC-D30P/ D30WSP/637P/327BP

- Compact and lightweight hand-held control unit
- For field production or video operational panel for CCU-M7P/M5P

- Power requirements:
DC 9 to 17V, from a camera or a CCU
- Power consumption:
0.4W
- Mass: 500 g (1 lb 2 oz)
- Dimensions: Approx.
86 (W) × 170 (H) × 47 (D) mm
(3¹/₂ × 6³/₄ × 1⁷/₈ inches)

- Inputs/outputs:
CAMERA: 10-pin
MONITOR OUT: BNC-type
AUXILIARY IN: 10-pin
- Control:
Gain select
Output mode select
VTR start/stop
Iris (auto/manual)
Auto iris override
White and black balance
(auto/manual/preset)
White balance memory
R/B gain
Gamma (manual/preset)
Master pedestal (manual/preset)
R/B pedestal
Knee point (auto/manual/preset)
Shutter speed select
Detail
Lock (ON/Part/OFF)



RM-LG1

Remote Control Unit

- Remote controller of DXC-D30P/D30WSP for ClipLink logging operation
- Especially useful in case that the camera operator concentrates only on shooting and logging should be done by another crew

- Dimensions: 25 (H) × 85 (W) × 12 (D) mm
(1 × 3³/₈ × 1¹/₂ inches)
(without projecting parts)
- Weight: Approx. 50 g (1.8 oz)
(including a cable)
- Cable: Length: 5 m
Connector: mini-plug
- Operating temperature:
-10°C to 45°C (14°F to 113°F)
- Storage temperature:
-20°C to 60°C (-4°F to 140°F)

- Supplied accessories:
Stickers (1 set)
Binding ties (4)
Panning rod mounting bracket (1)
Operating instructions (1)



RCP-TX7

Remote Control Panel

- Remote Control Panel of the CCU-TX7P
- Covers the complete range of control functions
- Can be installed into a standard 19-inch rack with RMM-TXR7 Rack Mount Kit

- Power requirements:
10 to 17V
(supplied from camera or CCU)
- Power consumption:
4.0W
- Operating temperature:
-10°C to 45°C (14°F to 113°F)
- Storage temperature:
-20°C to 55°C (-4°F to 131°F)
- Mass: Approx. 1.5 kg (3 lb 5 oz)

- Dimensions: 100 (W) × 330 (H) × 70 (D) mm
(4 × 13 × 2⁷/₈ inches)
- Cable length: 50m max. (with CCA-7 cable)
- Supplied accessories:
CCA-7-5 Connecting Cable (5m)
Number plate (1set)
Screws and washers × 2
Operation manual × 1



2. Production camera accessories

CA-325AP

Camera adaptor for DXC-D30P/ D30WSP/637P/327BP

- Multiple outputs of R/G/B, composite sync, VBS, Y/C and AUDIO signals
- Built-in AC power unit

Power requirements:

AC 220/240V, 50/60Hz

Power consumption:

44W

Inputs/outputs:

INTERFACE; 50-pin
VBS OUT; BNC-type
R/G/B OUT; BNC-type (x3)
COMPOSITE SYNC OUT;
BNC-type
Y/C OUT;
Y/C connector (Mini DIN 4-pin)
AUDIO OUT; Phono jack
GENLOCK IN; BNC-type
REMOTE; 10-pin
Mass: 1.3 kg (2 lb 14 oz)



CA-325B

Camera adaptor for DXC-D30P/ D30WSP/637P/327BP

- Multiple outputs of R/G/B, composite sync, VBS, Y/C and AUDIO signals
- DC operation type

Power requirements:

DC 12V

Inputs/outputs:

INTERFACE; 50-pin
VBS OUT; BNC-type
R/G/B OUT; BNC-type (x3)
COMPOSITE SYNC OUT;
BNC-type
Y/C OUT;
Y/C connector (Mini DIN 4-pin)
AUDIO OUT; Phono jack
GENLOCK IN; BNC-type
REMOTE; 10-pin
DC IN; XLR-type, 4-pin
Mass: 500 g (1 lb 2 oz)



CA-327P

Camera adaptor for DXC-D30P/ D30WSP/637P/327BP

- For interfacing DXC-D30P/D30WSP/637P/327BP with portable VTRs, CCU-M5P and CMA-8ACE
- Equips an S-connector and audio out connector
- The units with serial NO. 40100 and below can be used only with DXC-327P

Power requirements:

DC 12V

Inputs/outputs:

INTERFACE; DIN 50-pin
VTR/CCU/CMA; Sony Q-type, 14-pin
MIC IN; XLR-type, 3-pin
DC IN; XLR-type, 4-pin
GENLOCK IN; BNC-type
EARPHONE; mini jack
INTERCOM; mini intercom jack
Mass: 1.2 kg (2 lb 10 oz)



CA-537P

Camera adaptor for DXC-D30P/ D30WSP/637P/327BP

- For interfacing DXC-D30P/D30WSP/637P/327BP with portable VTRs, CCU-M7P/M5P and CMA-8ACE
- Supplies mic power from MIC IN connector

Power requirements:

DC 12V

Power consumption:

1.7W

Inputs/outputs:

INTERFACE; DIN 50-pin
VTR/CCU/CMA; Sony Z-type, 26-pin
MIC IN; XLR-type, 3-pin
DC IN; XLR-type, 4-pin
GENLOCK IN; BNC-type
EARPHONE; mini jack
INTERCOM; mini intercom jack
Mass: 1.3 kg (2 lb 14 oz)



2. Production camera accessories

CA-511

Camera adaptor for DXC-D30P/ D30WSP/637P/327BP

•Allows a BVV-5PS to be coupled with a DXC-D30P/D30WSP/637P/327P

Power requirements:

DC 12V

Power consumption:

0.1W

Inputs/outputs:

INTERFACE; DIN 50-pin

Betacam output; D-sub 50-pin

Mass:

0.5 kg (1 lb 2 oz)

Note: The CA-511 does not allow connection with the CA-50P/50AP series camera adaptors.



VIDEO CAMERAS

CA-512P

Camera adaptor for DXC-D30P/ D30WSP/637P/327BP

•Allows an AG-7450 Panasonic S-VHS video tape recorder to be coupled with a DXC-D30P/D30WSP/637P/327BP

Power requirements:

DC 12V

Power consumption:

0.35W

Input/outputs: INTERFACE; 50-pin ×1

68-pin ×1

Mass:

0.7 kg (1 lb 9 oz)



CA-TX7P

Camera Adaptor

•Camera Adaptor for the DXC-D30P/D30WSP/637P to the CCU-TX7 Triax Camera Control Unit. •Rotary (70°) triax connector for easy cabling •Allows box cursor indication on the viewfinder attached to the DXC-D30P/D30WSP, such as DXF-701CE/701WSCE/51/41. (This function is not available with the DXC-637P)

Supplied accessory:

Operation manual x 1

Input/output connectors:

CCU: Triax (Fischer type) × 1

CAMERA: Pro 76P Digital or Pro 50P switchable

MIC IN (CH-1/2): XLR 3-pin × 2, 600ohms, balanced

Input level: Mic in: -60dB

Line in: -20dB

DC IN: XLR 4-pin × 1, 10.5V to 17V

DC OUT: 4-pin × 1, 10.5V to 17V, Max 12W

PROMPTER OUT: BNC type × 1, 1.0Vp-p, 75ohms

RETURN OUT: BNC type × 1, 1.0Vp-p, 75ohms

INTERCOM/PROGRAMME:

XLR 5-pin × 1 (for Headset)

Input level: -60dBs (dynamic)

Output level: Aá to 12dBs

DATA OUT: 10-pin × 1

DC 0 to 5V (analogue) × 4

DC 0 or 5V (digital) × 2

Power requirements

DC 120V (from Triax connector) or

DC 12V (10.5 to 17.0V) (from DC IN connector)

Power consumption

	DC 120V		DC 12V	
	CA-TX7P	Total	CA-TX7P	Total
CA-TX7P only	10.5W	10.5W	7.5W	7.5W
w/DXC-D30P, DXF-701WSCE	11.2W	26W	7.5W	22.3W
w/DXC-D30P, DXF-51	12.3W	35W	7.5W	30.2W

Operating temperature:

-10 °C to 45 °C (14 °F to 113 °F)

Storage temperature:

-20 °C to 55 °C (-4 °F to 131 °F)

Operating humidity:

20% to 90%

Mass:

Approx. 2.7 kg (5 lb 15oz)

Dimensions: 226 (H) × 221 (W) × 131 (D) mm

(9 × 8³/₄ × 5¹/₄ inches)

(Note: This product is not available in some countries.)



2. Production camera accessories

CA-513

Camera adaptor for DXC-D30P/ D30WSP/637P/327BP

•Allows a BR-S422E JVC S-VHS video tape recorder to be coupled with a DXC-D30P/D30WSP/637P/327BP

Power requirements:
DC 12V

Power consumption:
0.15W

Input/outputs:INTERFACE: 50-pin × 2

Mass: 0.69 kg (1 lb 8 oz)



COU-TX7

Camera Operational Unit

•Operational Panel of the CCU-TX7P •Can be attached to form a part of the front panel of the CCU-TX7P •Supports basic control of camera operation and painting •Useful when using the CCU-TX7P in limited space

Supplied accessory:

Operation manual × 1

Mass: Approx. 330 g (12.6 oz)

Dimensions: 105 (H) × 155 (W) × 43 (D) mm
(4¹/₄ × 6¹/₈ × 1³/₄ inches)

(Note: This product is not available in some countries.)



DXF-501CE

High resolution 1.5-inch electronic viewfinder for EVW-300P, DXC-637P/ 327BP, UVW-100BP (monochrome)

•Supplied with the EVW-300PK/300PL

•Quick start CRT

•Sophisticated diopter design

Picture tube: 1.5-inch 50° deflection

Horizontal resolution:
550 lines (centre)

Power requirements:
DC 12V, supplied from a camera

Power consumption:
2.3W

Mass: Approx. 500 g (1 lb 2 oz)

Dimensions: Approx.
182 (W) × 64 (H) × 189 (D) mm
(7¹/₄ × 2⁵/₈ × 7¹/₂ inches)



DXF-601CE

High resolution 1.5-inch electronic viewfinder for DXC- 637P/327BP, UVW-100BP (monochrome)

•Supplied with DXC-637PK/637L,
PVW-637PK/637PL,

DXC-327BPF/327BPK/327BPL

UVW-100BPF/100BPK/100BPL

•Rugged, diecast aluminium body

•Large eye cup size

•Peak volume control

•High horizontal resolution of 600TV lines

•Quick start CRT

Picture tube: 1.5-inch monochrome

Horizontal resolution:
600 lines (centre)

Indicator: REC/TALLY indicator, BATT
indicator, SHUTTER indicator,
GAIN UP indicator

Power requirements:
DC 12V

Power consumption:
2.1W

Mass: 660 g (1 lb 7 oz)

Dimensions: Approx.
192 (W) × 63 (H) × 219 (D) mm
(7⁵/₈ × 2¹/₂ × 8⁵/₈ inches)



2. Production camera accessories

DXF-701WSCE

High resolution 1.5-inch electronic viewfinder for DXC-D30P/D30WSP (monochrome)

- Supports 16:9 and 4:3 aspect ratio
- Rugged, diecast aluminium body
- Large eye cup size
- Two Red REC Tally Lamps
- Peak volume control
- High horizontal resolution of 600TV lines
- Quick start CRT

Picture tube: 1.5-inch monochrome
 Horizontal resolution: 600 lines (centre)
 Indicator: REC x 2, TAKE, BATT, SHUTTER, GAIN UP
 Power requirements: DC 12V
 Power consumption: 2.1W
 Mass: 660 g (1 lb 7 oz)
 Dimensions: Approx. 236 (W) x 85 (H) x 219 (D) mm (9³/₈ x 3¹/₄ x 8⁵/₈ inches)



VIDEO CAMERAS

DXF-41

4-inch electronic viewfinder for DXC-D30P/D30WSP/637P/327BP, UVW-100BP, EVW-300P (monochrome)

- CCIR/EIA switchable
- Tally, intercom facilities
- Can be mounted into the RMM-1800 rack mounting metal

Picture tube: 4-inch monochrome, 50° deflection
 Horizontal resolution: 500 lines (centre)
 Connectors: DIN 8-pin connector
 Phone and mini for intercom
 Power requirements: Supplied from a camera

Power consumption: 10W
 Operating temperature: 0 to 40°C (32 to 104°F)
 Dimensions: Approx. 105 (W) x 107 (H) x 252 (D) mm (4¹/₄ x 4¹/₄ x 10 inches) including projecting parts and controls
 Mass: Approx. 1.62 kg (3 lb 9 oz) with stand and hood
 Supplied accessories: Stand (1), Screws (4), Hood (1) Connecting cord (mini-mini) (1)



DXF-51

5-inch Monochrome Viewfinder

- High horizontal resolution of 650 TV lines
- Stable video image • Bright and clear color image • Under Scanning capability • Can operate either on EIA and CCIR signals systems with automatic selection • 16:9/4:3 Automatic Aspect Ratio Selection • The viewfinder aspect ratio of the DXF-51 is automatically switched between 16:9 and 4:3 • Two red REC tally lamps • Green Tally Lamp which can be used as a second tally lamp for CCU operations • 20-pin connector for DXC-D30P/D30WSP • DIN 8-pin connector for DXC-327BP/637P etc. • +/- 40 degrees of tilting is possible • +/- 90 degrees of panning is possible • Rugged and compact body

Supplied accessories: Hood, 20-pin Cable, DIN 8-pin Cable, Operation Manual
Specifications
 Picture tube: 5-inch monochrome, 70° deflection
 Scanning system: 2:1 interlace, 625/50 or 525/59.94 switchable
 Horizontal resolution: 650TV lines (center)
 Camera connector: 20-pin or DIN 8-pin connector
 Power requirements: DC 12V +5.0/-1.5V (supplied from a camera)
 Power consumption: 11W
 Operating temperature: 0°C to 40°C (32°F to 104°F)
 Mass: Approx. 2.4 kg (5 lb 5 oz) with stand and hood
 Dimensions: Approx. 202 (H) x 199 (W) x 217 (D) mm (8 x 7⁷/₈ x 8⁵/₈ inches)



including projecting parts and controls
 Approx. 202 (H) x 199 (W) x 289 (D) mm (8 x 7⁷/₈ x 11¹/₂ inches) with stand and hood

DC-520

Battery adaptor for DXC-D30P/D30WSP/637P/327BP, UVW-100BP, EVW-300P

- For attaching two NP-1B battery packs to the DXC-D30P/D30WSP/637P/327BP, UVW-100BP, EVW-300P

Dimensions: Approx. 100 (W) x 195 (H) x 44 (D) mm (4 x 7³/₄ x 1³/₄ inches)
 Mass: Approx. 230 g (8 oz)



2. Production camera accessories

DR-100

Intercommunication headset

- Used in the DXC-D30P/D30WSP/637P/327BP, UVW-100BP, CCU-M5P/M7P, SEG-2550AP/2000AP
- With mini type 4-pole plug

Mass: 105 g (3.7 oz)



LC-421

Carrying case for DXC-D30P/ D30WSP/637P, DXC-327BP, UVW- 100BP

- Can hold the DXC-D30P/D30WSP/637P/327BP in camcorder configuration with DSR-1P/PVV-1AP/PVV-3P/EVV-9000P
- Supplied with the PVW-637PK/637PL, PVW-D30F, DSR-130PF, UVW-100BPF

Dimensions: Approx.
790 (W) × 440 (H) × 340 (D) mm
(31¹/₈ × 17³/₈ × 13¹/₂ inches)

Mass: 7.7 kg (17 lb)



LC-304SFT

Soft carrying case for DXC-D30P/ D30WSP/637P/327BP, EVW-300P, UVW-100BP

- Can hold DXC-D30P/D30WSP/637P/327BP in camcorder configuration with DSR-1P/BVV-5PS/PVV-1AP/PVV-3P/EVV-9000P
- Lightweight for easy transportation

Dimensions: Approx.
720 (W) × 360 (H) × 286 (D) mm
(28³/₈ × 14¹/₄ × 11³/₈ inches)

Mass: 2.2 kg (4 lb 14 oz)

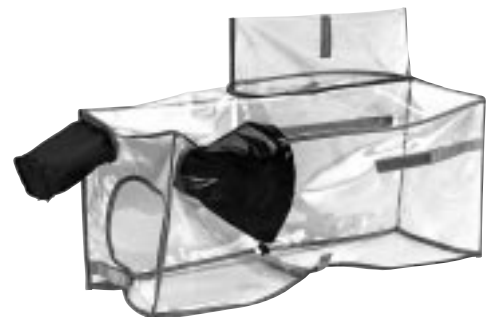


LCR-1

Camera rain cover for DXC-D30P/ D30WSP/637P/327BP, EVW-300P, UVW-100BP camcorders

- Can be used for the DXC-D30P/D30WSP/637P/327BP, in camcorder configuration with DSR-1P/BVV-5PS/PVV-1AP/PVV-3P/EVV-9000P
- Transparent material used to operate camera and VTR switches with the LCR-1 on

Mass: 260g (9 oz)



2. Production camera accessories

CAC-12

Camera microphone holder

- Adjustable microphone direction
- For attaching the ECM-672/670 or the C-74 condenser microphone to the DXC-D30P/D30WSP/637P/327BP, EVW-300P and UVW-100BP



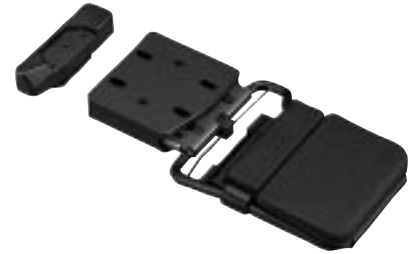
VIDEO CAMERAS

CAC-4

Chest pad for DXC-D30P/D30WSP/637P/327BP, EVW-300P, UVW-100BP

- Provides more stable camera operation
- Attachable to the VCT-12/14 /U14 tripod adaptors directly

Mass: Approx. 185 g (7 oz)



VCT-14

Tripod adaptor for DXC-D30P/D30WSP/637P/327BP, UVW-100BP

- To attach the DXC-D30P/D30WSP/637P/327BP and UVW-100BP to a tripod
- Adjustable camera position with screws

Dimensions: Approx.
282 (W) × 27 (H) × 80 (D) mm
(11¹/₈ × 1¹/₈ × 3¹/₄ inches)

Mass: Approx. 900 g (2 lb)



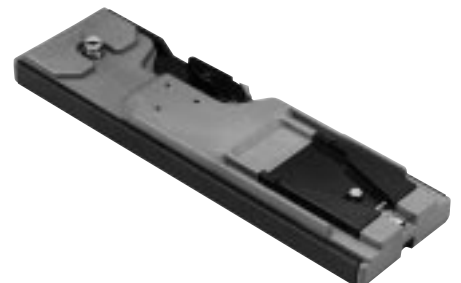
VCT-U14

Tripod adaptor for DXC-D30P/D30WSP/637P/327BP, UVW-100P

- Adjustable camera position with screws

Dimensions: 282 (W) × 27 (H) × 80 (D) mm
(11¹/₈ × 1¹/₈ × 3¹/₄ inches)

Mass: Approx. 900 g (2 lb)



2. Production camera accessories

RMM-1800

Rack-mounting metal

•This mounting adaptor is used for installing the DXF-41 and CMA-8ACE into a 19-inch EIA standard rack which provides a clean and organized arrangement for studio system

Dimensions: 482 (W) × 136.2 (H) × 223 (D) mm
(19 × 5³/₈ × 8⁷/₈ inches)

Mass: 3.1 kg (6 lb 13 oz)

Supplied accessories:

Blank panel × 2



RMM-TXC7

Rack Mount Kit

•Allows two CCU-TX7P units or one unit with a waveform monitor to be mounted into a standard 19-inch rack

Mass: Approx. 3.7 kg (8 lb 3 oz)

Dimensions: 482 (W) × 177 (H) × 380 (D) mm
(19¹/₈ × 7 × 15 inches)

Supplied accessories:

Installation manual × 1

Blank panel × 1

(Note: This product is not available in some countries.)



RMM-TXR7

Rack Mount Kit

•Up to four RCP-TX7P units can be installed into a standard 19-inch rack
•Comes with two blank panels

Mass: Approx. 2.7 kg (5 lb 12 oz)

Dimensions: 482 (W) × 75 (H) × 354 (D) mm
(19 × 3 × 14 inches)

Supplied accessories:

Installation manual × 1

Blank panel × 2

(Note: This product is not available in some countries.)



LO-32BMT

2/3-inch lens mount adaptor for DXC-327AP/9100P/950P/930P and EVW-300P

•For mounting a 2/3-inch bayonet-mount type lens on the DXC-327BP/9100P/950P/930P and EVW-300P



2. Production camera accessories

MVA-40

Microscope adaptor

- For mounting the DXC-327BP/9100P/950P/930P series onto various types of microscopes
- Automatic/manual light control

Dimensions: 74 (dia.) × 108(L) mm
(max. width of 116 mm)
(3 × 4³/₈ inches)
(max. width of 4 5/8 inches)

Mass: 600 g (1 lb 5 oz)



VIDEO CAMERAS

MVA-41A

Microscope adaptor

- For mounting the DXC-327BP/9100P/950P/930P series onto various types of microscopes

Dimensions: 50(dia.) × 77(L)mm
(2 × 3¹/₈ inches)

Mass: 180g (6 oz)



LO-23

Flexible cable unit

- Servo zooming and manual focusing for Fujinon Lens, such as VCL-916 BYA and VCL-714BX

Cable length: 1 m (3.3 ft)

Mass: 1.2 kg (2 lb 10 oz)



LO-26

Flexible cable unit

- Servo zooming and manual focusing for Canon Lenses, such as VCL-918BY

Cable length: 1 m (3.3 ft)

Mass: 1.1 kg (2 lb 7 oz)



2. Production camera accessories

MS-21 (by Canon)

Remote controller

- Servo zooming and manual focusing



2. Production camera accessories

VSF-2000D (by Heiwa)

Tripod/dolly

- Suitable for DXC-D30P/D30WSP/637P/327BP, EVW series, UVW-100BP
- For studio use
- Equipped with two panning rods

Minimum/Maximum height:
700 mm/1400 mm
(27⁵/₈ inches/55¹/₈ inches)
(without dolly)

Load capacity:
15 kg (33 lb 1 oz)

Mass: 10.5 kg (22 lb 2 oz) with dolly

VSF-L-20 (by Heiwa)

Carrying bag for VSF-2000D

Mass: 3.5 kg (7 lb 11 oz)



LIBEC 50SD (by Heiwa)

Tripod/dolly/carrying case

- Suitable for DXC-D30P/D30WSP/637P/327BP, EVW series, UVW-100BP
- Convenient brace as a standard equipment
- For field use
- Equipped with two extendable panning rods

Minimum/maximum height:
925 mm/1495 mm
(36.4 inches/58.9 inches)

Load capacity:
10 kg (22 lb)

Mass: 9 kg (19 lb 8 oz)

Supplied accessories:
Dolly carrying bag, Panning rods,
Spreader



LIBEC 60SD

LIBEC 70SD (by Heiwa)

Tripod/dolly/carrying bag/spreader

- Suitable for DXC-D30P/D30WSP/637P/327BP, EVW series, UVW-100BP
- High efficiency and high performance equipped with patented counter balanced tilting system
- For field use
- Equipped with two extendable panning rods

Minimum/maximum height:
60SD; 810 mm/1580 mm
(31.9 inches/62.2 inches)
70SD; 820 mm/1595 mm
(32³/₈ inches/62⁷/₈ inches)
(without dolly)

Load capacity:
60SD; 13 kg (29 lb)
70SD; 15 kg (33 lb 1 oz)

Mass: 60SD; 11 kg (24 lb 10 oz)
70SD; 11.2 kg (24 lb 5 oz)

Supplied accessories:
Dolly, Carrying bag, Panning rods, Spreader



LIBEC 80SD (by Heiwa)

Tripod/dolly/carrying case

- Suitable for DXC-D30P/D30WSP/637P/327BP, EVW series, UVW-100BP, etc.
- Serial drag and counter balance system
- Recommended for field use
- Equipped with two extendable panning rods

Minimum/maximum height:
560 mm/1645 mm
(22 inches/64.7 inches)

Load capacity:
17 kg (37 lb)

Mass: 13 kg (26 lb 1 oz)

Supplied accessories:
Dolly, Carrying bag, Panning rods,
Spreader



2. Production camera accessories

LIBEC 70PD (by Heiwa)

PEDESTAL SYSTEM

- Suitable for DXC-D30P/D30WSP/637P/327BP, EVW series, UVW-100BP
- Air can be pumped into a column even while a camera is mounted on the pedestal
- Highly suitable for small studios, event hall and hospitals

Minimum/maximum height: 955 mm/1710 mm
(37⁵/₈ inches/67¹/₂

inches)

Load capacity: 30 kg (66 lb 2 oz)

Mass: 21 kg (46 lb 5 oz)

Supplied accessories: Pedestal, Head, Pan handles, Scenario plate, Low angle adapter



2. Production camera accessories

System 14 (by Sachtler)

Video 14/75 Fluid head/Tripod S14 long/Spreader SP14/Cover 14pan

- Suitable for DXC-D30P/D30WSP/637P327BP, EVW aeries, UVW-100BP, etc.
- The patented Sachtler damping system ensures jerk free, precise and smooth camera movement, over a wide temperature range between -40°C (-40°F) to 60°C (140°F)
- Equipped with two panning bars

Minimum/Maximum height: 790 mm/1540 mm
($31\frac{1}{8}$ inches/ $60\frac{3}{4}$ inches)
(with spreader)

Load capacity: 15 kg (33 lb 1 oz)

Mass: 8 kg (17 lb 10 oz)

Supplied accessories: Spreader, two pan bars, carrying cover

Optional accessory:

Dolly 14II Code No. 7051

- The camera becomes mobile with the Dolly 14II for the studio use
- Can be compactly folded together by pressing a button and carried by using the built in handle

Mass: 4.4 kg (9 lb 11 oz)



Dolly 14II



System 18 Plus ENG 2 MCF

(by Sachtler)

Video 18 Plus Fluid head/Tripod ENG 2 CF/Off-ground spreader/Rubber feet/Padded bag ENG 2

- Suitable for DXC-D30P/D30WSP/637P327BP, EVW aeries, UVW-100BP, etc.
- New Video 18 Plus head has an illuminated bubble, Touch & Go camera lock for one hand operation, a tilt range of 180° under any load and many other extras
- With the two stage carbon fibre tripod and off-ground spreader, this system offers the optimum for any portable camera
- Equipped with two extendable pan bars

Minimum/maximum height: 580 mm/1665 mm
(22.8 inches/65.6 inches)

Load capacity: 25 kg (55 lb)

Mass: 9.5 kg (20 lb 15 oz)

Temperature range: -40 to 60°C (-40 to 140°F)

Supplied accessories: Off-ground spreader, Rubber feet, Two pan bars, Padded bag

Optional accessory:

Dolly S Code No. 7065

- Through the angle lock of the spinning wheel and the independent wheel brake, defined circles and precise parallel movements can be made
- For studio use
- Can be folded together and easily carried with it's built in handle

Mass: 4.45 kg (9 lb 13 oz)



Dolly S



2. Production camera accessories

Caddy System 01

Code No. CAD01 (by Sachtler)

- Suitable for DXC-D30P/D30WSP/637P/327BP, EVW series,UVW-100BP, etc.
- The patented Sachtler damping system ensures jerk free, precise and smooth camera movement, over a wide temperature range
- Equipped with one pan arm, 7+7 step fluid damping
- Sachtler flip switch fast balancing system
- Touch & Go quick camera locking system with a sliding range of 60mm

Minimum/Maximum height:
810 mm/1580 mm
(31.9 inches to 62.3 inches)

Load capacity:
12 kg (26.4 lb)

Mass: 7.1 kg (15.6 lb)

Supplied accessories:
Carbon fiber tripod, CF100long
Lightweight spreader, SP100
Transport cover, Cover 100



2. Production camera accessories

Vision 5-ST Package

(by Vinten)

Head/Tripod/Spreader/Soft Bag

•The high quality original "perfect-balance" system

•Suitable for DXC-D30P/D30WSP/637P/327BP, EVW series, UVW-100BP

Minimum/maximum height:

534 mm/1704 mm
(21 inches/67 inches)
(with spreader)

Load capacity:

9 kg (20 lb)

Mass: 8.0 kg (17 lb 10 oz) (with bag)

Tilt range: +85°/-75°

Supplied accessories:

Spreader, Soft bag

Optional accessory:

Lightweight dolly (3319-3ST)



VIDEO CAMERAS

Vision 10-ST Package

(by Vinten)

Head/Tripod/Spreader/Soft Bag

•The high quality original "perfect-balance" system

•Suitable for DXC-D30P/D30WSP/637P/327BP, EVW series, UVW-100BP

Minimum/maximum height:

549 mm/1719 mm
(21⁵/₈ inches/67⁷/₈ inches)

Load capacity:

14 kg (30 lb 14 oz)

Mass: 8.3 kg (18 lb 5 oz) (with bag)

Tilt range: +90°/-90°

Supplied accessories:

Spreader, Soft bag

Optional accessory:

Lightweight dolly (3319-3ST)



PRO-130/7GP (by Vinten)

Head/Tripod/Spreader/Soft Bag

•Suitable for light-weight cameras/camcorders, such as DSR-200P and UVW-100BP

•Low-cost tripod system with smooth pan/tilt operation

Package configuration:

PH130 Fluid Pan/Tilt Head
3451-3 Tripod
PS165 Spreader
Soft case

Minimum/maximum height:

580 mm/1450 mm
(22⁷/₈ inches/57¹/₈ inches)

Load capacity:

8 kg (17 lb 10 oz)

Mass: 2.3 kg (5 lb 1 oz)

Tilt range: ±85°

Pan range: 360°



PRO-130/10GP (by Vinten)

Head/Tripod/Spreader/Soft Bag

•Suitable for cameras/camcorders such as DSR-130P and PVW-D30P.

•Low-cost tripod system with smooth pan/tilt operation

Minimum/maximum height:

580 mm/ 1450 mm
(22⁷/₈ inches/57¹/₈ inches)

Load capacity:

10 kg (22 lb 0.7 oz)

Mass: 2.3 kg (5 lb 1 oz)

Tilt range: ±85°

Pan range: 360°

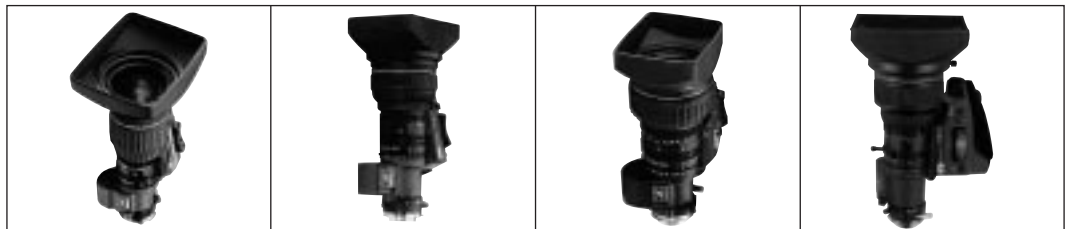
Package configuration:

PH130 Fluid Pan/Tilt Head
3451-3 Tripod
PS165 Spreader
Soft case

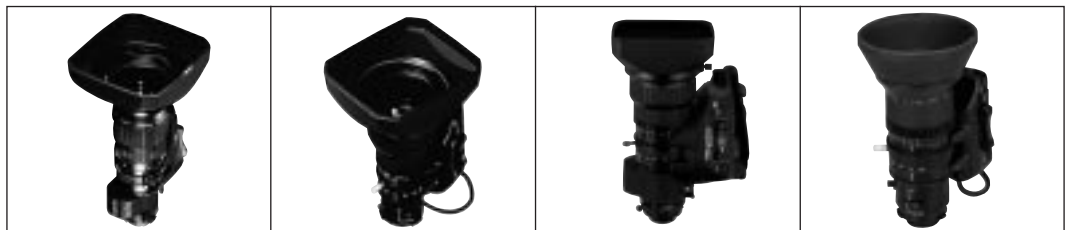


2. Production camera accessories

LENSES FOR DXC-D30P/D30WSP/637P, PVW-D30P/637P and DSR-130P camcorder (2/3-inch Bayonet mount type, 12-pin connector)



	J9a × 5.2BIRS	J15a × 8BIRS	YJ18 × 9BIRS	J20a × 8BIRS
Image format	$\frac{2}{3}$ -inch	$\frac{2}{3}$ -inch	$\frac{2}{3}$ -inch	$\frac{2}{3}$ -inch
Mount	Sony bayonet	Sony bayonet	Sony bayonet	Sony bayonet
Focal length	5.2 to 47 mm	8 to 119 mm	9 to 162 mm	8 to 160 mm
Zoom ratio	9×	15×	18×	20×
Zoom control	Manual & motorized	Manual & motorized	Manual & motorized	Manual & motorized
Iris control	Auto & manual	Auto & manual	Auto & manual	Auto & manual
Maximum aperture ratio	1.8	1.7	1.8	1.7
Minimum object distance	0.3 m	0.65 m	0.9 m	0.9 m
Zoom extender	2.0×	2.0×	2.0×	2.0×
Macro	Yes	Yes	Yes	Yes
Filter size	82 mmø	82 mmø	82 mmø	105 mmø
Mass	1.8 kg (3.97 lb)	1.4 kg (3 lb 2 oz)	1.5 kg (2.87 lb)	1.75 kg (3 lb 14 oz)
Dimensions	250.94 mm(L) (10 inches)	266.9 mm(L) (10 $\frac{5}{8}$ inches)	194.9 mm(L) (7 $\frac{3}{4}$ inches)	232.6 mm(L) (9 $\frac{1}{4}$ inches)
Note	By Canon	By Canon	By Canon	By Canon



	A10 × 4.8BEVM-28	A12 × 6.8BRM-58	A15 × 8BEVM-28B	VCL-916BYA
Image format	$\frac{2}{3}$ -inch	$\frac{2}{3}$ -inch	$\frac{2}{3}$ -inch	$\frac{2}{3}$ -inch
Mount	Sony bayonet	Sony bayonet	Sony bayonet	Sony bayonet
Focal length	4.8 to 48 mm	6.8 to 82 mm	8 to 120 mm	9 to 144 mm
Zoom ratio	10×	12×	16×	—
Zoom control	Manual & motorized	Manual & motorized	Manual & motorized	Manual & motorized
Iris control	Auto & manual	Auto & manual	Auto & manual	Auto & manual
Maximum aperture ratio	1.8	2.5	1.7	1.8
Minimum object distance	0.3 m	0.5 m	0.75 m	0.9 m
Zoom extender	2.0×	—	2.0×	—
Macro	Yes	Yes	Yes	Yes
Filter size	127 mmø	95 mmø	82 mmø	77 mmø
Mass	1.85 kg (4.0 lb)	1.38 kg (3.0 lb)	1.38 kg (3 lb 1 oz)	1.2 kg (2 lb 10 oz)
Dimensions	244 mm(L) (9 $\frac{5}{8}$ inches)	196 mm(L) (7 $\frac{3}{4}$ inches)	189 mm(L) (7 $\frac{1}{2}$ inches)	165 mm(L) (6 $\frac{1}{2}$ inches)
Note	By Fujinon	By Fujinon	By Fujinon	By Fujinon



	A16 × 9BERM-28	A20 × 8BEVM-28B	VCL-918BY
Image format	$\frac{2}{3}$ -inch	$\frac{2}{3}$ -inch	$\frac{2}{3}$ -inch
Mount	Sony bayonet	Sony bayonet	Sony bayonet
Focal length	9 to 144 mm	8 to 160 mm	9 to 162 mm
Zoom ratio	16×	20×	18×
Zoom control	Manual & motorized	Manual & motorized	Manual & motorized
Iris control	Auto & manual	Auto & manual	Auto & manual
Maximum aperture ratio	1.8	1.7	1.8
Minimum object distance	0.9 m	0.85 m	0.9 m
Zoom extender	2.0×	—	—
Macro	Yes	Yes	Yes
Filter size	77 mmø	95 mmø	82 mmø
Mass	1.35 kg (3 lb)	1.75 kg (3.8 lb)	1.3 kg (2.7 lb)
Dimensions	183.8 mm(L) (7 $\frac{1}{4}$ inches)	225.5 mm(L) (9 inches)	171.5 mm(L) (6 $\frac{7}{8}$ inches)
Note	By Fujinon	By Fujinon	By Canon

2. Production camera accessories

LENSES FOR DXC-327BP, UVW-100BP (1/2-inch Bayonet mount type, Hot-shoe connector)

			
	VCL-714BX	VCL-713BX	YH14 x 7.3KRS
Image format	1/2-inch	1/2-inch	1/2-inch
Mount	Sony 1/2-inch bayonet	Sony 1/2-inch bayonet	Sony bayonet
Focal length	7.5 to 105 mm	7.5 to 97.5 mm	7.3 to 102 mm
Zoom ratio	14x	13x	14x
Zoom control	Manual & motorized	Manual & motorized	Manual & motorized
Iris control	Auto & manual	Auto & manual	Auto & manual
Maximum aperture ratio	1.4	1.4	1.4
Minimum object distance	1.1 m	1.0 m	1.0 m
Zoom extender	—	—	—
Filter size	72 mmø	72 mmø*	82 mmø
Mass	11 kg (2 lb 6 oz)	910 g (2 lb)	1.0 kg (2.2 lb)
Dimensions	186 mm(L) (7 ³ / ₈ inches)	147.5 mm(L) (5 ⁷ / ₈ inches)	184 mm(L) (7 ¹ / ₄ inches)
Lens connector	Hot-shoe type	Hot-shoe type	Hot-shoe type
Notes	By Fujinon	By Canon	By Canon

*82mmø Filter is also usable by fitting it in the lens hood.

LENSES FOR DXC-327BP, UVW-100BP (1/2-inch Bayonet mount type, Hot-shoe connector)

			
	S16 x 6.7BRM-18	S16 x 6.7BERM-18	YH17 x 7 KRS
Image format	1/2-inch	1/2-inch	1/2-inch
Mount	Sony 1/2-inch bayonet	Sony 1/2-inch bayonet	Sony 1/2-inch bayonet
Focal length	6.7 to 107mm	6.7 to 107mm	7 to 119mm
Zoom ratio	16x	16x	17x
Zooming control	Manual & motorized	Manual & motorized	Manual & motorized
Iris control	Auto & manual	Auto & manual	Auto & manual
Maximum aperture ratio	1.4	1.4	1.4
Minimum object distance	0.9m	0.9m	0.95m
Zoom extender	—	2.0x	—
Filter size	77mmø	77mmø	82mmø
Mass	1.2kg (2 lb 10 oz)	1.35kg (3 lb)	1.45kg (3 lb 3 oz)
Dimensions	165mm(L) (6 ¹ / ₂ inches)	188.5mm(L) (7 ¹ / ₂ inches)	168.9mm(L) (6 ³ / ₄ inches)
Lens connector	Hot-shoe type	Hot-shoe type	Hot-shoe type
Notes	By Fujinon	By Fujinon	By Canon

3. Sensor video cameras

DXC-H10

2/3 inch 3-CCD Color Video Camera (not available in Europe)

- Three 2/3 inch IT (Interline Transfer) Hyper HAD™ CCDs
- New HDVS (High Definition Video System) camera with 2,000,000 effective picture elements and 1000TV lines of resolution
- High sensitivity of F8.0 at 2,000 lux
- Compact and light weight: 1200 g
- CCD IRIS™, AGC (Automatic Gain Control), and Auto Iris function control wide range of incoming light levels
- Four pattern Light Metering System with selectable detection method (Multi, Average, Spot, and Peak Mode)
- Three white balance modes (AWB, ATW, Manual)
- Ten step electronic shutter speed selection
- On-screen programmable menu functions
- Full function control from the rear panel or the optional RM-C950 Remote Control Unit
- Precise picture controls including Linear Matrix, Vertical Shading Compensation, Advanced Detail, Knee, Master Pedestal, and Negative/Positive mode
- Flash synchronization function
- Various electronic shutter functions including Clear Scan™, Long Term Exposure, RR (Restart Reset), and LTR (Long Term Reset)



Supplied Accessories: Lens mount cap (1)
Name sheet for the buttons on the RM-C950 (1)
Operating Instructions (1)

Optional Accessories: Camera Adaptor CMA-H10
Remote Control Unit RM-C950
Digital Scan Converter DSC-1024
Camera Cable CCZ-A2/A5/A10/A25/A50/A100
Microscope adaptors and couplers MVA-690/20/33, MVAC-33-0/N/SM
Monitor cable CCXC-9DBS, D-SUB 9-pin ↔ 5 BNC

Specifications

Image system/optical system

Image device: Three 2/3-inch Interline Transfer Hyper HAD CCDs
Picture elements: 1920 (horizontal) × 1035 (vertical)
Shooting system: CCD 3-chip
Lens: Prism type, F1.4
Lens mount: 2/3 inch bayonet type

Video system

Synchronization: Internal/external synchronization, automatic switching
Signal format: HD format (conforms to BTA standard)
Output frequency (horizontal/vertical): 33.75 kHz/60 Hz or 33.71 kHz/59.94 Hz (60 Hz or 59.94 Hz switchable)

Functions/performance

Horizontal resolution: 1000TV lines
Min. illumination: 16 lx (F1.4, G or Y: 100%, gain: + 12 dB)
Sensitivity: 2000 lux (F8, 3,200K) system
Signal-to-noise ratio: 50 dB (Y, Gain: 0 dB, Gamma: OFF, 100 kHz to 30 MHz)

Gain control: Fixed: 0/6/12 dB selectable
AGC: Automatically adjusted within range of 0 dB to 12 dB

White balance: AWB: automatic adjustment (2,500 K to 9,000K) (R. PAINT and B. PAINT adjustable)
ATW: Automatic tracing (R. PAINT and B. PAINT adjustable)
MANU: Manual adjustment (R. GAIN and B. GAIN adjustable)

Color temperature: 3200K/5600K switchable
Electronic Shutter: CCD IRIS: Automatic exposure control (within range of 1/60-1/100000 seconds)
STEP: 1/100 (flickerless mode), 1/250, 1/500, 1/1000, 1/2000, 1/4000, 1/10000, 1/20000, 1/40000, 1/100000 s
MANU: 2 to 256 frames (low speed mode frame), 1 to 560H (high speed mode)

External Trigger Shutter: RR (Restart Reset)
EXT. TRIG
LTR (Long-term reset)

AE mode: MULTI, AVERAGE, SPOT, PEAK
Knee: HI, LOW, AUTO
Master Pedestal: Adjusts pedestal levels of G, B, and R channels simultaneously
Linear Matrix: ON/OFF switchable

Vertical Shading compensation:

OFF/MANUAL switchable
Gamma compensation: ON/OFF switchable
Negative/Positive mode: ON/OFF switchable
Accumulation mode: Field/frame switchable
Detail compensation: ON/OFF switchable
Flash synchronization: ON/OFF switchable
Video signal output mode: GBR/YP_B P_R switchable
Sync signal format: Tri-level sync signal/Bi-level switchable
Sync signal input/output mode: Input/output switchable (HD/VD and SYNC signals switched simultaneously)
Horizontal phase: Adjustable

Inputs/outputs

Video input/output signals:
Y/R/G/B output: 1 Vp-p (75 ohms)
P_B/P_R output: 0.7 Vp-p (75 ohms)
HD/VD input/output: 1 Vp-p (75 ohms)
SYNC input/output: 0.6 Vp-p (tri-level, 75 ohms), 0.3 Vp-p (bi-level)
WEN pulse: TTL level, negative

External sync input: SYNC or HD/VD switched automatically
External trigger input: TTL level, negative
Pulse width: more than 3H

Input/output connectors: MONITOR: D-sub 9-pin
CAMERA ADAPTOR: 26-pin
LENS IRIS: 12-pin
LENS CTRL: 12-pin
FLASH: small coaxial type

General

Power supply: 15 V DC (10.5 to 15 V)
Power consumption: Approx. 25 W
Operating temp: -5 to 45°C (23 to 113°F)
Storage temp: -20 to 60°C (-4 to 140°F)
Operating humidity: 20% to 80% (free of condensation)
Storage humidity: 20% to 95% (free of condensation)
Dimensions: 95 (W) × 95 (H) × 160 (D) mm (3³/₄ × 3³/₄ × 6³/₈ inch)
Mass: 1.2 kg (2 lb 10 oz)

3. Sensor video cameras

DXC-LS1P

CCD Colour Video Camera

- Extremely small and compact camera composed of a camera head and a camera control unit
- 1/4-inch Hyper HAD CCD adoption
- High picture quality with 460TV lines, a high sensitivity of F5.6 at 2000 lx and an excellent signal-to-noise ratio
- Advanced color matrix function allows you to adjust R, G and B colours independently for accurate colour reproduction
- Easy call-up function of favorite settings (2 patterns)
- Exchangeable camera head
- AE control function (A CCD IRIS function combined AGC) provides automatic control over incoming light
- Automatic backlight adjustment
- Built-in electronic zoom function (x1.00 to x3.00)
- Four-pattern Light Metering System with selectable detection method
- Alternative White Balance Control modes - AWB, ATW, 5600K or 3200K (Trimming with R/B paint function is possible with AWB, 5600K and 3200K)
- Shutter speed control capability for long term exposure
- With variable gamma function, the contrast of the picture can be changed for a clear view
- Enhancer function provides crisper, sharper images
- Three different sizes of color bars
- Flicker canceller is provided, freeing the electronic shutter
- Positive films can be shot as negative, or vice versa
- B&W mode for sharp images free from colour noise
- Built-in RS-232C interface
- Genlock capability with VBS
- Y/C or VBS output
- Optional CMA-D2CE or AC-E90HG can be used for power supply



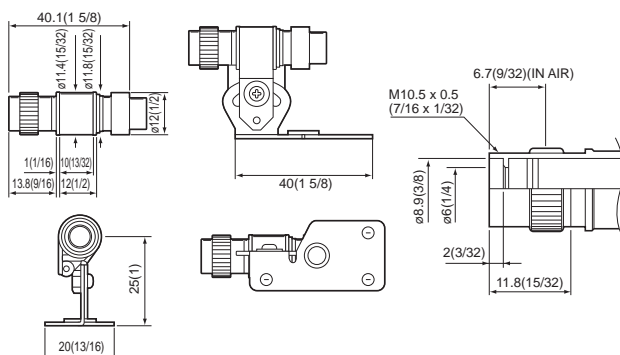
VIDEO CAMERAS

Supplied Accessories: Camera cable (3m)
Tripod adaptor (1)
Lens mount cap (1)
Operation manual (1)

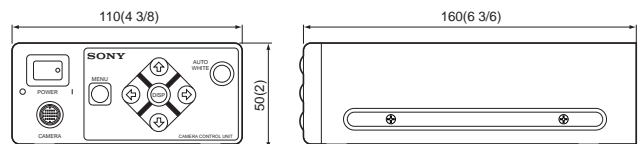
Specifications

Image device: 1/4-inch Interline Transfer Hyper HAD CCD
Picture elements: 752(H) × 582(V)
Sensing area: 3.2 × 2.4 mm (1/4-inch)
Scanning system: 625 lines, 2 : 1 interlace
Sync system: Internal or external with VBS
Phase control: H (0 to +255) / SC (0/180, 0 to +255)
Horizontal resolution: 460TV lines
Lens mount: Ultra mount
Sensitivity: 2000 lx with F5.6
Minimum illumination: 10 lx (F1.2)
Gain control: AGC / 0 to -12dB (1dB steps) switchable
Electronic shutter: OFF/MANUAL/AUTO
MANUAL: 1/50, 1/100, 1/125, 1/250, 1/1000, 1/2000, 1/4000, 1/8000, 1/10000, 1/20000, 1/40000 (seconds)
2 to 512 fields, ODD/EVEN switchable
Signal-to-noise ratio: 44dB
White balance: ATW/AWB/5600K/3200K selectable (R/B paint: -128 to 0 to +128)
AE mode: ON/OFF switchable
AE level: -60 to 0 to +60
Light metering system: Backlight compensation/Full/Centre (Large)/Centre (Small)/Slit (Large)/Slit (Small)
Detection method: Peak/average switchable
Master pedestal: -10 to 0 to +40
H Enhancer: -16 to 0 to +15
Zoom: ON (x1.00 to x3.00)/OFF switchable

Dimensions



Colour matrix: ON/OFF switchable
R : -60 to 0 to +60
G : -60 to 0 to +60
B : -60 to 0 to +60
Gamma: -16 to 0 to +15
Colour mode: ON/OFF switchable
Colour bars: FULL/HI/LOW/OFF switchable
Negative/Positive reverse: ON/OFF switchable
Menu memory: 2 pages
Flicker canceller: AUTO/OFF switchable
Baud rate: 19200, 9600, 4800
Video out: VBS: 1.0Vp-p, 75Ω, sync negative
Y/C: Y : 1.0Vp-p, 75Ω, sync negative
C : 0.3Vp-p, at burst level, 75Ω
Operating temperature: 0°C to 40°C (32°F to 104°F)
Storage temperature: -20°C to 60°C (-4°F to 140°F)
Power requirements: DC 12V (Supplied from CMA-D2CE)
DC 9V (Supplied from AC-E90HG)
Power consumption: 5W
Maximum cable length: 10m using 10m optional cable (CCMC-16P10)
Mass: Camera head (without lens and supplied cable) : 8g (0.3 oz)
Camera control unit : Approx. 665g (1 lb 7 oz)
Connectors: Camera head : CAMERA (16-pin)
Camera control unit : CAMERA (20-pin), VIDEO OUT (BNC), DC IN/VBS (12-pin, DC jack), Y/C (DIN 4-pin), GENLOCK (BNC), RS-232C (8-pin), WE OUT (PIN)



Unit: mm (inch)

3. Sensor video cameras

DXC-9100P

3-CCD Colour Video Camera

- Progressive scan 3-CCD camera featuring full-frame dynamic image capturing
- Square picture pixels adoption (8.3µm x 8.3µm) for more accurate measurements
- Three alternative signal output capability - Normal mode and Frame shutter mode (2:1 interlace) and Non-interlaced mode
- High picture quality with 800TV lines, a high sensitivity of F5.6 at 2000lx and an excellent S/N ratio of 57dB
- By utilizing the built-in frame memory, freeze function (continuous freeze mode or source/freeze mode is selectable) and long term exposure function can be controlled without external equipment
- Three-pattern Light Metering System with selectable detection method
- Remote control from the optional RM-C950 Remote Control Unit or CCU-M5P Camera Control Unit is possible
- Built-in RS-232C interface
- On-screen four divided menu with User Preset function for easy set-up
- Digital control CCD IRIS function (equivalent to four F-stops) and AGC automatically adjusts a wider range of incoming light levels
- Alternative White Balance Control modes - AWB, ATW (Trimming with R/B paint function is possible) or manual (R/B gain level adjustment)
- Variable speed electronic shutter such as External Trigger Shutter, Clear Scan function in addition to the conventional eight-step selection
- RGB output via a 9-pin D-sub connector
- Y/C or VBS output can be selected from the 9-pin D-sub connector
- Composite signal output via a BNC connector
- Genlock capability with VBS or BS signals
- Accepts bayonet-mount lenses with a hot-shoe connection
- Optional CMA-D2CE can be used for power supply



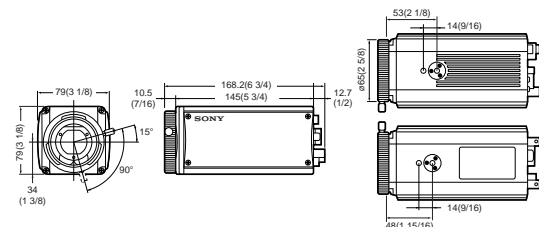
Supplied Accessories: Lens mount cap (1)
 Operation manual (1)
 Buttons label for the optional RM-C950 Remote Control Unit

Specifications

Image device: 1/2-inch Interline Transfer Hyper HAD CCD (x3)
 Picture elements: 782(H) x 582(V)
 Sensing area: 6.4 x 4.8 mm
 Scanning system: PAL standard format : 625 lines, 2:1 interlace
 Non-interlaced format : 1/50, Non-interlaced
 Horizontal frequency: PAL standard format : 15.625kHz
 Non-interlaced format : 31.25kHz
 Vertical frequency: PAL standard format : 50Hz
 Non-interlaced format : 50Hz
 Sync system: Internal or external with VBS, BS, VS, SYNC or HD/VD
 Phase control: H (-99 to 0 to +99) / SC (0/180, -99 to 0 to +99)
 Green-on-sync: ON/OFF switchable
 Horizontal resolution: 800TV lines
 Vertical resolution: 575TV lines
 Lens mount: 38 mm bayonet mount
 Sensitivity: 2000 lx with F5.6 (3200K)
 Minimum illumination: 15 lx (F1.4, +18dB)
 Signal-to-noise ratio: 57dB
 Gain control: AGC / 0 to 18dB (1dB steps) switchable
 Electronic shutter: OFF/STEP/VARIABLE/CCD IRIS selectable
 STEP : 1/50, 1/120*, 1/125, 1/250, 1/500, 1/1000, 1/2000, 1/4000, 1/10000 (seconds)
 0.1, 0.2, 0.3, 0.5, 1.0, 1.5, 2.0, 2.5, 3.0, 3.5, 4.0, 5.0, 6.0, 7.0, 8.0 (seconds)
 VARIABLE : 255 to 1 frame, 312/625 to 1/625H
 Large/Medium/Spot (Peak/average switchable)
 AE Window:
 Colour temperature: 3200K/5600K
 White balance: ATW, AWB (R/B Paint : -10 to 0 to +10)
 MANU (R/B Gain : -127 to 0 to +127)
 ON/OFF switchable
 External trigger shutter: INT. CTRL/EXT. CTRL switchable
 Freeze control: ON/OFF switchable
 Master pedestal: -99 to 0 to +99
 Detail: ON/OFF switchable (-99 to 0 to +99)
 Gamma: ON/OFF switchable
 User preset: A/B switchable
 User protect: ON/OFF switchable
 Baud rate: 9600, 4800, 2400, 1200
 Trigger pulse: Negative pulse/Positive pulse switchable

Video out: VBS: 1.0Vp-p, 75Ω, sync negative
 RGB : 0.7Vp-p, 75Ω
 Y/C : Y : 1.0Vp-p, 75Ω, sync negative
 C : 0.3Vp-p, at burst level, 75Ω
 VGA : RGB : 0.7Vp-p
 SYNC/HD/VD : 2.0Vp-p, 75Ω
 WEN : 5.0Vp-p, high impedance
 External sync input: VBS/BS/VS/SYNC/HD/VD
 (VBS : 1.0Vp-p or burst 0.3Vp-p, SYNC : 0.3Vp-p, HD/VD : 2.0 to 4.0Vp-p), 75Ω
 External trigger input: Trigger pulse, low level : 0 to 0.5V, high level : 4.5 to 5.0V, high impedance
 Operating temperature: -5°C to 45°C (23°F to 113°F)
 Storage temperature: -20°C to 60°C (-4°F to 140°F)
 Power requirements: DV 12V (Supplied from CMA-D2CE or CCU-M5P)
 Power consumption: Approx. 12W
 Mass: Approx. 790g (1 lb 11 oz)
 Connectors: LENS (6-pin), RGB/SYNC (D-sub 9-pin), DC IN/VBS (12-pin), VIDEO OUT (BNC), CCU (20-pin), REMOTE (8-pin), EXT CTRL (BNC), HOT SHOE (14-pin)

Dimensions



Unit: mm (inch)

* Flickerless mode

3. Sensor video cameras

DXC-950P

3-chip CCD colour video camera

- Multi-purpose 3-CCD compact camera for versatile industrial video applications
- Newly developed 1/2-inch IT Power HAD sensor CCDs
- High horizontal resolution of 750TV lines
- Extremely high sensitivity of F8.5 at 2000 lx
- Excellent signal-to-noise ratio of 58dB
- Excellent colour reproduction
- Convenient operational functions including Flash Synchronization and Three-pattern Light Metering System
- Various precise picture controls
- Field or frame integration mode selectable
- Remote control from the optional RM-C950/RM-930 Remote Control Unit or CCU-M5P Camera Control Unit
- Built-in RS-232C serial interface
- On-screen four divided menu with Memory Bank function for easy set-up
- Digital control CCD IRIS function (equivalent to six F-stops) and AGC automatically adjusts a wide range of incoming light level
- Alternative White Balance Control Modes - AWB, ATW (Trimming with R/B Paint function is possible) or manual (R/B gain level adjustment)
- Minutely controlled electronic shutter speed - Manual speed selection (1H for Clear Scan or 1 frame step for long term exposure) in addition to the conventional 8-step speed selection

Supplied accessories: Lens mount cap
Operation manual

Optional accessories: Camera adaptor CMA-D2CE
Remote control unit RM-C950
Remote control unit RM-930
Camera control unit CCU-M5P
Digital Still Recorder DKR-700P
DC cable CCDC-5/10/25/50A/100A
12-pin multi-core cable CCMC-12P02/05/10/25
Component/RGB cable CCXC-9DD
Component/RGB cable CCXC-9DB
Component/RGB cable CCMC-9DS
Component/RGB cable CCMC-9DSMN
Camera cable CCTQ-3RGB
Camera cable CCTZ-3RGB
Camera cable CCTZ-3YC
Camera cable CCMC-1210P3
Microscope adaptor with auto iris MVA-40
Microscope adaptor MVA-41A
Microscope adaptor (one way) MVA-265
Coupler for NIKON microscopes except the SMZ-10 series MVAC-33-N
Coupler for NIKON SMZ-10 series microscopes MVAC-33-SM
Coupler for OLYMPUS microscopes MVAC-33-O
Coupler for ZEISS microscopes except AXIOVERT 100/135 series and SV series ZBB
Coupler for ZEISS AXIOVERT 100/135 series and SV series microscopes ZSV
2/3-inch Lens Mount Adaptor LO-32BMT
Manual zoom lens VCL-707BXM
Remote zoom lens VCL-712BXEA
Remote zoom lens VCL-714BXEA
Remote zoom lens VCL-716BXEA

Specifications

Image device: 1/2-inch Interline Transfer Power HAD CCD (x3)
Picture elements: 752(H) x 582(V)
Sensing area: 6.4mm x 4.8mm
Video signal system: PAL standard
Scanning system: 625 lines, 2:1 interlace
Sync system: Internal or external with VBS or BS
Horizontal resolution: 750TV lines
Lens mount: 38 Bayonet mount
Sensitivity: 2000 lx with F8.5
Minimum illumination: 6.5 lx (F1.4)
Gain control: AGC/0 to 18dB (1dB step)/ISO (400, 800, 1600) switchable
Electronic shutter: OFF (1/50s)/STEP/Long Exp./C. Scan switchable
STEP: 1/120(FL), 1/125, 1/250, 1/500, 1/1000, 1/2000, 1/4000, 1/10000 (seconds)
Long Exp.: 255 to 1 frames (for field mode), 256 to 2 frames (for frame mode), OFF
C. Scan: 310/625 to 1/625(H), OFF
CCD IRIS control: ON/OFF switchable
White balance: ATW, AWB (R/B Paint: -7 to 0 to +7)
MANU (R/B Gain: -99 to 0 to +99)
Signal-to-noise ratio: 58dB

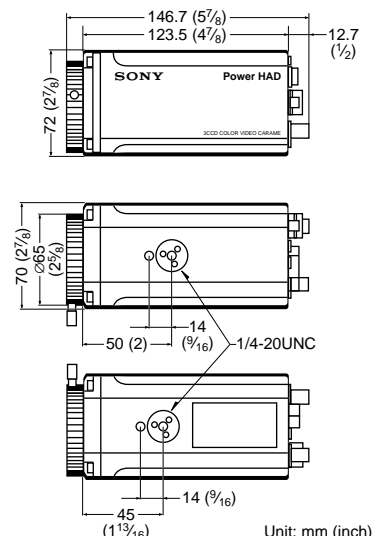


Lens is optional



Linear matrix: ON/OFF switchable
Shading compensation: OFF/1 to 9
Master pedestal: -99 to 0 to +99
Detail: -99 to 0 to +99
Phase control: H/SC phase control
H. phase: -99 to 0 to +99
SC phase: 0/180
Fine: -99 to 0 to +99
Gamma: ON/OFF switchable
Knee: 1/2 switchable
Green-on-sync: ON/OFF switchable
Memory bank: A/B switchable
Memory protect: ON/OFF switchable
Data send: A>B, B>A switchable
Baud rate: 9600, 4800, 2400, 1200
Flash mode: OFF/master/slave switchable
Printer trigger: ON/OFF switchable
Video out: VBS: 1.0Vp-p, 75Ω, sync negative
RGB: 0.7Vp-p, 75Ω
Y/C: Y: 1.0Vp-p, 75Ω, sync negative
C: 0.3Vp-p, 75Ω, without sync
Y/R-Y/B-Y: Y: 1.0Vp-p, 75Ω
R-Y: 0.525Vp-p, 75Ω
B-Y: 0.525Vp-p, 75Ω
Operating temperature: -5 to 45°C (23 to 113°F)
Storage temperature: -20 to 60°C (-4 to 140°F)
Power requirements: DC 12V
(supplied from CMA-D2CE or CCU-M5P)
7.8W
Power consumption: Approx. 670g (1 lb 8 oz)
Connectors: LENS (6-pin), RGB/SYNC (D-sub 9-pin), GENLOCK IN (BNC), DC IN/REMOTE (12-pin), VIDEO OUT (BNC), CCU (20-pin), FLASH (Synchronous socket), REMOTE (8-pin)

Dimensions



3. Sensor video cameras

DXC-930P

3-chip CCD colour video camera

- Multi-purpose 3-CCD compact camera for various industrial video applications
- High density three 1/2-inch IT Hyper HAD sensor CCDs offer superior picture quality:
 - High horizontal resolution of 720TV lines
 - High sensitivity of F5.0 at 2000 lx
 - Excellent signal-to-noise ratio of 56dB
 - Excellent colour reproduction
- Various built-in camera function controls •Field or frame integration mode selectable •Remote control from the optional RM-930 Remote Control Unit or CCU-M5P/M7P Camera Control Unit •Long distance control of lens zoom/focus functions is possible by connecting CCU-M5P/ M7P with RM-930 •Control menu can be displayed in characters on the monitor •Digital control CCD IRIS function (equivalent to three F-stops) automatically adjusts the incoming light levels •AGC or 1dB step Gain control •Automatic or manual (R/B gain level adjustment) white balance control mode •Minutely controlled electronic shutter speed—Manual speed selection (1H or 1 frame step) in addition to the conventional 8-step speed selection

- Supplied accessories: Lens mount cap
Operation manual
- Optional accessories: Camera adaptor CMA-D2CE
Remote control unit RM-930
Camera control unit CCU-M5P
Camera control unit CCU-M7P
Digital Still Recorder DKR-700P
DC cable CCDC-5/10/25/50A/100A
12-pin multi-core cable CCMC-12P02/05/10/25
Camera cable CCMC-1210P3
RGB cable CCXC-9DD
RGB cable CCXC-9DB
RGB cable CCMC-9DS
RGB CCMC-9DSMN
Camera cable CCTQ-3RGB
Camera cable CCTZ-3RGB
Camera cable CCTZ-3YC
Microscope adaptor with auto iris MVA-40
Microscope adaptor MVA-41A
Microscope adaptor (one way) MVA-265
Coupler for NIKON microscopes except the SMZ-10 series MVAC-33-N
Coupler for NIKON SMZ-10 series microscopes MVAC-33-SM
Coupler for OLYMPUS microscopes MVAC-33-O
Coupler for ZEISS microscopes except AXIOVERT 100/135 series and SV series ZBB
Coupler for ZEISS AXIOVERT 100/135 series and SV series microscopes ZSV
2/3-inch Lens Mount Adaptor LO-32BMT
Manual zoom lens VCL-707BXM
Remote zoom lens VCL-712BXEA
Remote zoom lens VCL-714BXEA
Remote zoom lens VCL-716BXEA

Specifications

- Image device: 1/2-inch Interline Transfer Hyper HAD CCD (x3)
Picture elements: 752(H) x 582(V)
Sensing area: 6.4mm x 4.8mm
Video signal system: PAL standard
Scanning system: 625 lines, 2:1 interlace
Sync system: Internal or external with VBS or BS
Horizontal resolution: 720TV lines
Lens mount: 38 Bayonet mount
Sensitivity: 2000 lx with F5.0
Minimum illumination: 19 lx (F1.4, +18dB)
Gain control: AGC/0 to 18dB (1dB step) switchable
OFF (1/50s)/STEP/MANU switchable
Electronic shutter: STEP: 1/120(FL), 1/125, 1/250, 1/500, 1/1000, 1/2000, 1/4000, 1/10000 (seconds)
MANU: 255 to 1 frames (for field mode), 256 to 2 frames (for frame mode), OFF, 310/625 to 1/625(H)
CCD IRIS control: ON/OFF switchable
White balance: AUTO/MANUAL (R/B gain: -99 to 0 to 99) selectable

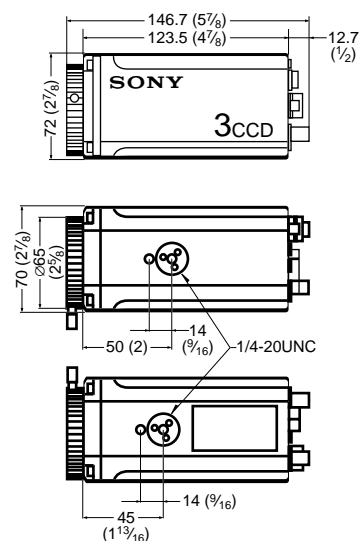


Lens is optional



- Signal-to-noise ratio: 56dB (Gamma:OFF, DTL:OFF)
Master pedestal: -99 to 0 to +99
Detail: -99 to 0 to +99
Phase control: H/SC phase control
H. phase: -99 to 0 to +99
SC phase: 0/180
Fine: -99 to 0 to +99
Gamma: ON/OFF switchable
Green-on-sync: ON/OFF switchable
Video out: VBS: 1.0Vp-p, 75Ω, sync negative
RGB: 0.7Vp-p, 75Ω
Y/C: Y: 1.0Vp-p, 75Ω, sync negative
C: 0.3Vp-p, 75Ω, without sync
Operating temperature: -5 to 45°C (23 to 113°F)
Storage temperature: -20 to 60°C (-4 to 140°F)
Power requirements: DC 12V
(supplied from CMA-D2CE or CCU-M5P/M7P)
Power consumption: 7.8W
Mass: Approx. 670g (1 lb 8 oz)
Connectors: LENS (6-pin), RGB/SYNC (D-sub 9-pin), GENLOCK IN (BNC), DC IN/REMOTE (12-pin), VIDEO OUT (BNC), CCU (20-pin)

Dimensions



Unit: mm (inch)

3. Sensor video cameras

DXC-151AP

CCD colour video camera

- RGB camera for image processing
- High resolution 2/3-inch IT Hyper HAD CCD, together with a primary colour G stripe R/B sequential filter, offers 460TV lines (VBS or Y/C output) or 440TV lines (RGB output) of horizontal resolution and superior colour reproduction
- Signal-to-noise ratio of 46dB
- RGB output via a 9-pin D-sub connector
- S-video (Y/C) output is available through the CMA-D2CE camera Adaptor (connected to the camera via 12-pin multi-connector or 9-pin D-sub connector)
- Composite signal output via a BNC, 9-pin D-sub or 12-pin connector
- 3-position selectable CCD IRIS covers various light conditions—BACKLIGHT/STANDARD/SPOTLIGHT
- Genlock capability with VBS or BS signals
- Four alternative white balance control: Automatic control modes—AWB (Auto White Balance)/ATW (Auto Tracing White), Preset modes—INDOOR (3200K)/OUTDOOR (5600K)
- Variable speed electronic shutter
- C-mount adoption
- Remarkably compact and lightweight



Lens is optional



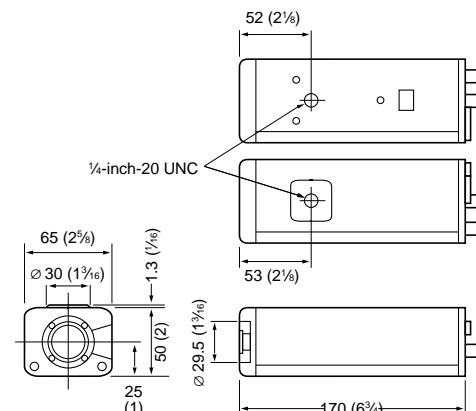
- Supplied accessories: Lens connector
Lens mount cap
Operating instruction manual
Camera adaptor CMA-D2CE
- Optional accessories: DC cable CCDC-5/10/25/50A/100A (5/10/25/50/100m)
12-pin Multi cable CCMC-12P02/05/10/25 (2/5/10/25m)
RGB cable CCXC-9DD (9-pin D-sub ↔ 9-pin D-sub)
RGB cable CCXC-9DB (9-pin D-sub ↔ 5BNC's)
RGB cable CCMC-9DS (9-pin D-sub ↔ 4BNC's, DIN 4-pin)
Microscope adaptor MVA-12
Coupler for NIKON microscopes except the SMZ-10 series MVAC-33-N
Coupler for NIKON SMZ-10 series microscopes MVAC-33-SM
Coupler for OLYMPUS microscopes MVAC-33-O
Coupler for ZEISS microscopes except AXIOVERT 100/135 series and SV series ZBB
Coupler for ZEISS AXIOVERT 100/135 series and SV series microscopes ZSV
Manual zoom lens VCL-1106YM (11.5 to 69mm, F1.4)

Specifications

- Image device: 2/3-inch Interline Transfer Hyper HAD CCD
Primary colour G stripe R/B sequential filter
- Picture elements: 756 (H) × 581 (V)
- Sensing area: 8.8mm × 6.6mm
- Video signal system: PAL standard
- Sync system: Internal or external with VBS or BS
- Horizontal resolution: 460TV lines (VBS or Y/C output)
440TV lines (RGB output)
- Lens mount: C mount (Back focus adjustable)
- Sensitivity: F5.6 at 2,000 lx
- Minimum illumination: 13 lx with F1.4 (+12dB)
- Gain control: 0, +6, +12dB, AGC selectable
- Electronic shutter: OFF, 1/120(FL), 1/250, 1/500, 1/1000, 1/2000, 1/4000, 1/10000 (seconds)
- S/N ratio: 46dB
- Phase control: H/SC phase control
- CCD IRIS control: BACKLIGHT/STANDARD/SPOTLIGHT switchable
- Video out: VBS: 1.0Vp-p, 75Ω, Sync negative
RGB: 0.7Vp-p, 75Ω
Y/C: Y: 1.0Vp-p, 75Ω
C: 0.3Vp-p, 75Ω
- Operating temperature: 0 to 40°C (32 to 104°F)
- Storage temperature: -20 to 60°C (-4 to 140°F)
- Power requirements: DC 12V supplied from CMA-D2CE
- Power consumption: 7W
- Maximum cable length: 100m using CCDC-100A DC cable and CMA-D2CE
25m using CCMC-12P25 multi-core cable and CMA-D2CE
- White balance: AUTO: ATW or AWB
PRESET: 3200K or 5600K
- Mass: Approx. 520g (1 lb 2 oz) without lens

- Connectors: VIDEO OUT (BNC)
GENLOCK IN (BNC)
DC IN (12-pin)
LENS (4-pin)
RGB, VBS or Y/C out (9-pin D-sub)

Dimensions



3. Sensor video cameras

DXC-107AP

CCD colour video camera

- High resolution 1/2-inch IT Hyper HAD sensor CCD offers high quality picture
- High sensitivity in minimum illumination of only 4.5 lx with F1.2 lens
- Signal-to-noise ratio of 46dB
- High horizontal resolution of 460TV lines
- S-video output is available through the CMA-D2CE Camera Adaptor
- Four alternative white balance control: Automatic control modes—AWB (Auto White Balance)/ATW (Auto Tracing White), Preset modes—INDOOR (3200K)/OUTDOOR (5600K)
- 3-position selectable CCD-IRIS covers various light conditions—BACKLIGHT/STANDARD/SPOTLIGHT
- Variable speed electronic shutter
- Built-in four digit ID number generator
- C-mount adoption
- External genlock capability of VS
- Together with the CMA-D7CE/YS-W250P Camera Adaptor, video and sync signals, and DC power can be transmitted up to 300 metres away through a single 5C-2V coaxial cable
- Remarkably compact and lightweight



Lens is optional

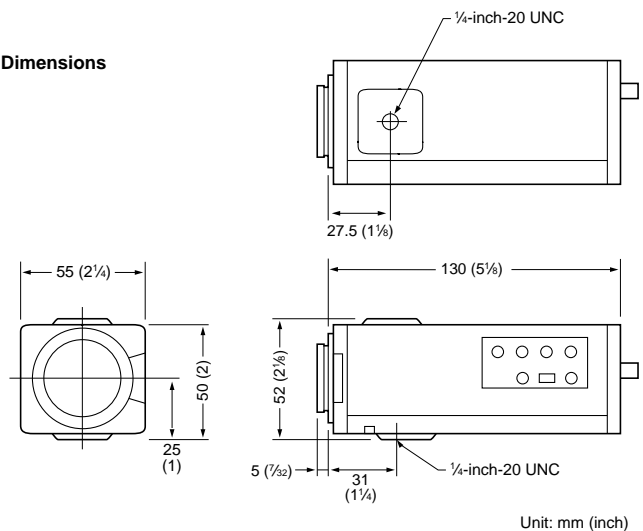


Supplied accessories:	Lens connector Lens mount cap
Optional accessories:	Operating instruction manual Camera adaptor CMA-D7CE Camera adaptor CMA-D2CE Camera adaptor YS-W250P DC cable CCDC-5/10/25/50A/100A 12-pin multi-core cable CCMC-12P02/05/10/25 Microscope adaptor MVA-12 Coupler for NIKON microscopes except the SMZ-10 series MVAC-33-N Coupler for NIKON SMZ-10 series microscopes MVAC-33-SM Coupler for OLYMPUS microscopes MVAC-33-O Coupler for ZEISS microscopes except AXIOVERT 100/135 series and SV series ZBB Coupler for ZEISS AXIOVERT 100/135 series and SV series microscopes ZSV

Specifications

Image device:	1/2-inch InterlineTransfer Hyper HAD CCD
Picture elements:	752 × 582 (V)
Sensing area:	6.4mm × 4.8mm
Video signal system:	PAL standard
Sync system:	Internal or external with VS
Horizontal resolution:	460TV lines
Lens mount:	C mount
Sensitivity:	F5.6 at 2,000 lx (AGC off)
Minimum illumination:	4.5 lx with F1.2 (AGC on)
Gain control:	AGC ON/OFF switchable
Electronic shutter:	OFF, 1/120(FL), 1/250, 1/1000, 1/2000, 1/4000, 1/10000 (seconds)
S/N ratio:	46dB
CCD IRIS control:	BACKLIGHT/STANDARD/SPOTLIGHT switchable
Phase control:	H phase control
Video out::	VBS: 1.0Vp-p, 75Ω, sync negative Y/C: Y: 1.0Vp-p, 75Ω, sync negative C: 0.3Vp-p, 75Ω, without sync
Operating temperature:	0 to 40°C (32 to 104°F)
Power requirements:	DC 12V from CMA-D2CE/D7CE DC 28V from CMA-D7CE/YS-W250P
Power consumption:	3.3W using CCMC-12P multi-core cable or CCDC DC cable (DC 12V) 6.3W using coaxial cable (DC 28V)
Maximum cable length:	300m using 5C-2V coaxial cable and CMA-D7CE/YS-W250P 100m using CCDC-100A DC cable and CMA-D2CE 25m using CCMC-12P25 multi-core cable and CMA-D2CE/D7CE
White balance:	AUTO: ATW or AWB PRESET: 3200K or 5600K
Mass:	Approx. 360g (12.7 oz) without lens
Connectors:	DC IN/VIDEO OUT (BNC) DC IN (12-pin) LENS (4-pin)

Dimensions



Unit: mm (inch)

4. Sensor camera accessories

CMA-D2CE

Camera adaptor for DXC-9100/950P/930P/151AP/107AP/LS1P

- Supplies DC power with a CCDC cable to cameras
- Transmits DC power and video/sync signals between the camera and the adaptor with a CCMC cable
- Maximum cable length:
100m with CCDC-100A cable
25m with CCMC-12P25 cable
- 19-inch EIA standard rack mountable

Connectors: CAMERA (12-pin MULTI)
CAMERA (4-pin DIN)
VIDEO OUT (BNC)
S VIDEO OUT
(Mini DIN 4-pin)
GEN-LOCK IN (BNC)

DC out: 13V, 1.3A
Power requirements:
AC 100 to 240V, 50/60Hz

Power consumption:
24.5W
Dimensions: 210(W) × 50(H) × 200(D)mm
(8³/₈ × 2 × 7⁷/₈ inches)

Mass: 1.1kg (2 lb 7 oz)
Supplied accessories:
AC power cord
Operation manual



VIDEO CAMERAS

CMA-D7CE

Camera adaptor for DXC-107AP

- Power supply and video/sync signal transmission by connecting to DXC-107AP with a single coaxial cable
- Maximum cable length:
300m with 5C-2V cable
25m with CCMC-12P25 cable

Connectors: CAMERA (12-pin)
DC OUT/VIDEO IN (BNC)
VIDEO OUT (BNC × 2)
HD IN/OUT (BNC, loop-through, 75Ω ON/OFF)
VD (GENLOCK) IN/OUT
(BNC, loop-through, 75Ω ON/OFF)

DC out: 28V, Max. 0.25A (BNC)/
12V, Max. 0.3A (12-pin)

Power requirements:
AC 220 to 240V, 50/60Hz
Power consumption:
35W
Dimensions: 105(W) × 104.5(H) × 254.7(D)mm
(4¹/₄ × 4¹/₄ × 10¹/₈ inches)

Mass: 2.7 kg (5 lb 15 oz)
Supplied accessories:
AC power cord
Operation manual



YS-W250P

AC adaptor for DXC-107AP

- Power supply and video/sync signal transmission by connecting to the camera with a single coaxial cable
- Up to four cameras can be connected
- Internal or external synchronization with VS or AC line lock
- Extends the cable length up to 300m with 5C-2V coaxial cable

Connectors: CAMERA IN 1 to 4 (BNC × 4)
VIDEO OUT A 1 to 4 (BNC × 4)
VIDEO OUT B 1 to 4 (BNC × 4)
SYNC IN/OUT (BNC, loop-through, 75Ω ON/OFF switch)

Power requirements:
AC 220 to 240V, 50Hz

Power consumption:
48W
Dimensions: 424 (W) × 52(H) × 330(D)mm
(16³/₄ × 2¹/₈ × 13 inches)

Mass: 3.6kg (7 lb 15 oz)



RM-C950

Remote control unit

- Full remote control of the DXC-9100P/950P camera functions and lens zoom/focus/iris functions via RS-232C
- Facilitated operation with knob control of gain, detail, master pedestal, red and blue gain functions
- A printer button is provided
- Power is supplied through the DXC-9100P/950P connected to the CMA-D2CE Camera Adaptor or CCU-M5P Remote Control Unit

Power requirements:
DC 12V (supplied from DXC-9100P/950P connected to CMA-D2CE or CCU-M5P)

Operating temperature:
-5 to 45°C (23 to 113°F)

Connectors: CAMERA (8-pin)

Control: IRIS (AUTO/MANUAL)
ZOOM
FOCUS
COLOUR BAR
MENU DISPLAY
GAIN (STEP/AGC/ISO)
SHUTTER SPEED
(OFF/STEP/LONG
EXP/C.SCAN/CCD IRIS)
AE WINDOW
(LARGE/MEDIUM/SPOT)
FIELD/FRAME (CCD
INTEGRATION MODE)
COLOUR TEMPERATURE
(3200K/5600K)
WHITE BALANCE
(AUTO/MANUAL/ATW)
LINEAR MATRIX
SHADING COMPENSATION
MASTER PEDESTAL
DETAIL
H. PHASE
SC PHASE
FINE
GAMMA
KNEE



G. SYNC
MEMORY BANK
MEMORY PROTECT
DATA SEND
D-SUB OUTPUT (VBS/Y/C,
RGB/COMPONENT)
BAUD RATE
FLASH
PRINTER TRIGGER
Mass: Approx. 400g (14 oz)
Dimensions: 212(W) × 41(H) × 132(D)mm
(8³/₈ × 2⁵/₈ × 5¹/₄ inches)
Supplied accessories:
Connection cable (3m)
Operation manual

4. Sensor camera accessories

RM-930

Remote control unit

- Full remote control of the DXC-930P/950P camera functions and lens zoom/focus/iris functions
- Long distance control (up to 300m) of zoom and focus function of lens by connecting CCU-M5P with CCMC-1210P3
- DC operation capability with the optional CMA-D2CE Camera Adaptor
- Usable cables

DXC-930P/950P(RM-930)	RM-930(CMA-D2CE)
CCMC-12Pcable	CCMC-12P or CCDC cable
CCMC-12P02/05/10/25	CCDC-5/10/25/50A
CCMC-12P02/05/10	CCMG-12P02/05/10/25
CCMC-12P25	CCMC-12P02/05/10

Power requirements:

DC 12V (supplied from CMA-D2CE)

Operating temperature:

-5 to 45°C (23 to 113°F)

Connectors: CAMERA (12-pin)
MONITOR OUT (BNC)
DC IN (12-pin)

Control: IRIS (AUTO/MANUAL)
ZOOM
FOCUS
COLOUR BAR
MENU DISPLAY
GAIN (STEP/AGC/ISO¹)
SHUTTER SPEED
(OFF/STEP/LONG EXP./
C. SCAN/CCD IRIS)
AE WINDOW (LARGE/MEDIUM/SPOT)¹
FIELD/FRAME (CCD INTEGRATION MODE)
COLOUR TEMPERATURE (3200K/5600K)
WHITE BALANCE (AUTO/MANUAL/ATW¹)
AUTO BLACK BALANCE²
LINEAR MATRIX¹
SHADING COMPENSATION¹
MASTER PEDESTAL
DETAIL
H. PHASE
SC PHASE
FINE
GAMMA



KNEE¹
G SYNC
MEMORY BANK¹
MEMORY PROTECT¹
DATA SEND¹
D-SUB OUT (VBS/Y/C, RGB/
COMPONENT¹)
BAUD RATE¹

Mass:

Approx. 400g (14 oz)

Dimensions:

212(W) × 52.5(H) × 132(D)mm
(8³/₈ × 2¹/₈ × 5¹/₄ inches)

Supplied accessories:

CCMC-12P05 cable
Operation manual

Note: ¹ When used with the DXC-930P, these items can not be controlled.

² When used with the DXC-950P, this item can not be controlled.

LO-UCMT

C-mount adaptor for DXC-LS1P

- For mounting C-mount type lens on the DXC-LS1P



MVA-12

Video camera microscope adaptor

- For 2/3-inch video camera with C-mount (DXC-107AP*/151AP)

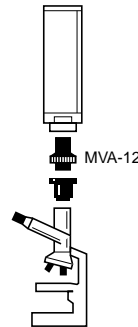
Video camera mount: C-mount

Applicable microscope: Biological or metallurgical microscope with straight tube

Dimensions: 48(dia.) × 98(L)mm
(1⁵/₁₆ × 3⁷/₈ inches)

Mass: 120g (4.2 oz)

* Although the MVA-12 can also be used with the DXC-107AP(1/2-inch camera), the effective viewing area is to be changed.



MVA-20

Microscope adaptor with Auto Iris

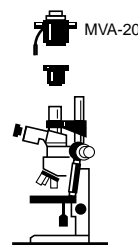
- For 2/3-inch video camera with bayonet mount

Video camera mount: Bayonet

Applicable microscope: Biological or metallurgical microscope

Dimensions: 74(dia.) × 116(W) × 104(L)mm
(3 × 4⁵/₈ × 4¹/₈ inches)

Mass: 600g (1 lb 5 oz)



4. Sensor camera accessories

MVA-33

Microscope adaptor

- For 2/3-inch video camera with bayonet mount

Video camera mount: Bayonet
Applicable microscope: Biological or metallurgical microscope
Dimensions: 55(dia.) × 100(L)mm
(2¹/₄ × 4 inches)
Mass: 250g (9 oz)



MVAC-33 series

Coupler

- MVAC-33-N: For NIKON microscopes except the SMZ-10 series
- MVAC-33-SM: For NIKON SMZ-10 series microscopes
- MVAC-33-O: For OLYMPUS microscopes
- Used with the MVA-12/20/33/40/41A

Dimensions: MVAC-33-N;
48(dia.) × 44(L)mm
(1⁵/₁₆ × 1³/₄ inches)

MVAC-33-SM;
47(dia.) × 87.5(L) mm
(1⁷/₈ × 3¹/₂ inches)

MVAC-33-O;
55(dia.) × 48(L)mm
(2¹/₄ × 1⁵/₁₆ inches)

Mass: MVAC-33-N; 50g (1.8 oz)
MVAC-33-SM; 125g (5 oz)
MVAC-33-O; 100g (3.6 oz)



MVAC-33-N



MVAC-33-SM



MVAC-33-O

ZBB and ZSV

Coupler

- ZBB: For Zeiss microscopes except the AXIOVERT 100/135 series and SV series
- ZSV: For Zeiss AXIOVERT 100/135 series and SV series microscopes
- Used with the MVA-12/20/33/40/41A

Dimensions: ZBB;
62(dia.) × 110(L)mm
(2¹/₂ × 4³/₈ inches)

ZSV;
52(dia.) × 131(L) mm
(2¹/₈ × 4¹/₄ inches)



ZBB



ZSV

MVA-40

Microscope adaptor

- For mounting the DXC-327BP/9100P/950P/930P series onto various types of microscopes
- Automatic/manual light control

Dimensions: 74 (dia.) × 108(L) mm
(max. width of 116 mm)
(3 × 4³/₈ inches)
(max. width of 4 5/8 inches)
Mass: 600 g (1 lb 5 oz)



4. Sensor camera accessories

MVA-41A

Microscope adaptor

- For mounting the DXC-327BP/9100P/950P/930P series onto various types of microscopes

Dimensions: 50(dia.) × 77(L)mm
(2 × 3¹/₈ inches)

Mass: 180g (6 oz)



MVA-265

Operation microscope adaptor (one way)

- For 1/2-inch video camera with bayonet mount (DXC-9100P/950P/930P)
- For Carl Zeiss OPMI series/TOPCON 600 series

Video camera mount: Bayonet
Applicable microscope: Operation microscope
Dimensions: 148(W) × 92(H) × 50(D)mm

(5⁷/₈ × 3⁵/₈ × 2 inches)

Mass: 550g (1 lb 3 oz)



MVA-365

Operation microscope adaptor (one way)

- For 2/3-inch video camera with bayonet mount
- For Carl Zeiss OPMI series/TOPCON 600 series

Video camera mount: Bayonet
Applicable microscope: Operation microscope
Dimensions: 80(W) × 154(H) × 86(D)mm

(3¹/₄ × 6¹/₈ × 3¹/₂ inches)

Mass: 650g (1 lb 7 oz)



MVA-380

Operation microscope adaptor (two way)

- For 2/3-inch video camera with bayonet mount
- For Carl Zeiss OPMI series/TOPCON 600 series
- Focus can be remotely controlled by the supplied remote controller

Video camera mount: Bayonet
Applicable microscope: Operation microscope
Dimensions: 70 (W) × 94 (H) × 184 (D) mm
(2⁷/₈ × 3³/₄ × 7¹/₄ inches)

Mass: 750g (1 lb 10 oz)



4. Sensor camera accessories

RM-S2/S5 series (by Fujinon)

Remote controller

- RM-S2 series for servo zooming and focusing
- RM-S5 series for servo zooming and manual focusing

RM-S2 series: RM-S2C/S2D

RM-S5 series: RM-S5D



RM-S2

4. Sensor camera accessories

LENSES FOR DXC-151AP (2/3-inch C mount type)



	J10 x 10REA-IA-II*	VCL-1106YM
Mount	C	C
Focal length	10 to 110mm	11.5 to 69mm
Zoom ratio	10x	6x
Zoom control	Remote	Manual
Iris control	Auto	Manual
Maximum aperture ratio	1.4	1.4
Filter size	62mmø	46mmø
Supplied accessory	Remote control box CC-8T-II, MD cable (10m)	—
Mass	Lens: 700g (1 lb 9 oz) CC-8T-II: 1.3kg (2 lb 14 oz)	410g (14 oz)
Dimensions	Lens: 80(W) x 70(H) x 122.3(D)mm (3 ¹ / ₄ x 2 ⁷ / ₈ x 6 ¹ / ₂ inches)	58(dia.) x 107.8(L)mm (2 ³ / ₈ x 4 ¹ / ₄ inches)
Power requirements	AC100/117/220/240V, 50/60Hz (CC-8T-II)	—
Notes	By Canon	By Canon

* Auto-iris control by the E-E amps, which are installed in the lenses, makes the J10 x 10REA-IA-II particularly suitable for multi-camera operation by a single remote control box.

LENSES FOR DXC-151AP (2/3-inch C mount type)



J10 x 10R-II
J10 x 10REA-II



CC-8T-II (Supplied to J10 x 10R-II, PH10 x 8REA-IA-II)
Dimensions: 170(W) x 45(H) x 130(D)mm
(6³/₄ x 1¹³/₁₆ x 5¹/₈ inches)

	J10 x 10R-II
Mount	C
Focal length	10 to 110mm
Zoom ratio	10x
Zoom control	Remote
Iris control	Remote
Maximum aperture ratio	1.4
Filter size	62mmø
Supplied accessory	Remote control box CC-8T-II, MD cable (10m)
Mass	Lens: 700g (1 lb 9 oz) CC-8T-II: 1.3kg (2 lb 14 oz)
Dimensions	Lens: 80(W) x 70(H) x 122.3(D)mm (3 ¹ / ₄ x 2 ⁷ / ₈ x 6 ¹ / ₂ inches)
Power requirements	AC100/117/220/240V, 50/60Hz (CC-8T-II)
Notes	By Canon

4. Sensor camera accessories

LENSES FOR DXC-107AP (1/2-inch C mount type)



	PH10 × 8REA-IA-II
Mount	C
Focal length	8 to 80mm
Zoom ratio	10×
Zoom control	Remote
Iris control	Auto
Maximum aperture ratio	1.2
Filter size	62mmø
Supplied accessory	Remote control box CC-8T-II, MD cable (10m)
Mass	Lens: 700g (1 lb 9 oz) CC-8T-II: 1.3kg (2 lb 14 oz)
Dimensions	Lens: 70(W) × 80(H) × 126.6(D)mm (2 ⁷ / ₈ × 3 ¹ / ₄ × 5 inches)
Power requirements	AC100/117/220/240V, 50/60Hz (CC-8T-II)
Notes	By Canon

LENSES FOR DXC-950P/930P (1/2-inch Bayonet mount type)



	VCL-707BXM	S16 × 6.7BMD-D38	VCL-714BXEA	VCL-716BXEA	YH17X7 KTS B (by Canon)
Mount	Bayonet	Bayonet	Bayonet	Bayonet	Bayonet
Focal length	7.5 to 52.5mm	6.7 to 107 mm	7.5 to 105mm	7 to 112mm	7 to 119mm
Zoom ratio	7×	16×	14×	16×	17×
Zoom control	Manual	Remote	Remote	Remote	Remote
Focus control	Manual	Remote	Remote	Remote	Remote
Iris control	Manual	Remote	Remote	Remote	Remote
Maximum aperture ratio	1.6	1.4	1.4	1.4	1.4
Minimum object distance	0.3m	0.9 m	1.1m	1.0m	0.95m
Macro	Not applicable	Applicable	Applicable	Applicable	Applicable
Filter size	M58 × 0.75mm	M77 × 0.75mm	M72 × 0.75mm	M86 × 1.0mm	M82 × 0.75mm
Mass	560 g (1 lb 4 oz)	1.25 kg (2.7 lb)	1.13 kg (2 lb 6 oz)	1.8kg (3 lb 15 oz)	1.7kg (3 lb 12 oz)
Dimensions	60(dia.) × 125(L)mm (2 ³ / ₈ × 5 inches)	120(dia.) × 165 (L)mm (4 ³ / ₄ × 6 ¹ / ₂ inches)	110(dia.) × 185.9(L)mm (4 ³ / ₈ × 7 ³ / ₈ inches)	120.5(W) × 100(H) × 178(D)mm (4 ³ / ₄ × 4 × 7 ¹ / ₈ inches)	128(W) × 97.5(H) × 168.9(D)mm (5 ¹ / ₈ × 3 ⁷ / ₈ × 6 ³ / ₄ inches)
Notes	—	Zoom/Focus/Iris functions can be remotely controlled from the RM-C950/930			

Video camera accessory combinations

		DXC-D30P/D30WSP	DXC-637P	DXC-327BP	DXC-950P	DXC-930P	DXC-151AP	DXC-107AP	DXC-9100P	DXC-LS1P
Camera control unit	CCU-TX7P	○	○							
	CCU-M7P	○*1	○*1	○*2		○				
	CCU-M5P	○*5	○	○	○	○			○	
AC adaptor	CMA-8ACE	○	○	○						
	CMA-D2CE				○	○	○	○	○	○
	CMA-D7CE							○		
	YS-W250P							○		
Viewfinder	DXF-701CE	○								
	DXF-601CE		○	○						
	DXF-501CE		○	○						
	DXF-40BCE		○	○						
	DXF-50BCE		○	○						
Carrying case	LC-420			○						
	LC-421	○	○							
	LC-304SFT	○	○	○						
Tripod adaptor	VCT-12									
	VCT-14	○	○	○						
	VCT-U14	○	○	○						
Inter-com headset	DR-100	○	○	○						
Microscope/endoscope adaptor	MVA-12						○	△*3		
	MVA-20	○	○							
	MVA-33	○	○							
	MVAC-33	○	○	○	○	○	○	○	○	
	MVA-40			○	○	○			○	
	MVA-41A			○	○	○			○	
	MVA-265				○	○			○	
	MVA-365	○	○							
	MVA-380	○	○							
	ZBB/ZSV	○	○	○	○	○	○	○	○	
Others	DC-520	○	○	○						
	CAC-4	○	○	○						
	CAC-12	○	○	○						
	RM-M7G	○	○*1	○*2						
	CA-327P	○*4	○*4	○*4						
	CA-537P	○	○	○						
	CA-511	○	○	○						
	CA-512P	○	○							
	CA-513	○	○	○						
	CA-325AP	○	○	○						
	CA-325B	○	○	○						
	LO-32BMT			○	○	○			○	
	LO-UCMT									○
	RM-C950			○	○				○	
RM-930					△	○				

○ Recommendable △ Usable

*1 Gamma control cannot be used.

*2 Knee and gamma controls cannot be used.

*3 Although the MVA-12 is the Microscope Adaptor for 2/3-inch video cameras, it can also be used with the DXC-C1/107AP. In this case, the effective viewing area is changed.

*4 Available for CA-327P models with serial No. 40101 and above.

*5 Matrix (STD, H.SAT, FL) cannot be controlled.